

SURE

- Release Notes
- Release Letter

Release 110.1

October 2023

ITSforSURE

IT Services & Solutions for SURE

www.itsforsure.nl

Content

1	Notes for the SURE 110 release of October 2023	1
1.1	Introduction	1
1.2	Migration	1
1.3	Installing the mainframe software	3
1.3.1	Install new objects and upgrade/create a repository	3
1.4	Compatibility	4
1.4.1	Database compatibility	4
1.4.2	Compatibility with MCP releases	4
1.4.3	Compatibility with previous SURE releases.....	5
1.4.4	Compatibility with Windows versions	7
1.5	Upgrading the SURE software to release 110.x.....	8
1.5.1	Automatic upgrade feature of the client software.	8
1.5.2	Multiple installations of the SURE client on one workstation	12
1.5.3	About SURE release numbers	13
2	Features and improvements	14
2.1	Detailed descriptions of the most important new features, release 110.x.....	14
Task-1573-SURE	Define Help-information for the screens under folder Datamodel	15
Task-1602-SURE	Update properties: keep a log of the changes	16
Task-1606-SURE	Extra events in the SURE log when a task is transferred	17
Task-1630-SURE	Make each batch function only visible for users with right privileges	19
Task-1636-SURE	New method to handle the parameters of batch programs	20
Task-1662-SURE	Define a default project and file-type for a directory	21
Task-1670-SURE	Review support for MCP data files that are loaded in SURE	23
Task-1673-SURE	Show the review status on the task forms	26
Task-1676-SURE	Implement SURE Find in delta files	27
Task-1679-SURE	Change the background color of the SURE browser	29
Task-1681-SURE	Function Select file: allow to enter a directory name	31
Task-1690-SURE	Use ClearPath Visual IDE as editor for MCP sources	32
Task-1695-SURE	Improvements for Task Reference	40
Task-1701-SURE	Use UltraEdit as local editor for MCP sources.....	42
Task-1709-SURE	Implement SURE Site Library for the SURE Windows backend	46
Task-1710-SURE	Use Notepad++ as local editor for MCP sources.....	47
3	New or deleted batch programs and batch functions	56
ABOUT-SURE	(Batch Function)	56
ALWAYS-LISTING	(Batch Function)	56
CLEAN-REVIEWED	(Batch Function)	56
REVIEWED-OVERVIEW	(Batch Function)	57
LOAD-CVIDE-FILES	(Batch Function)	58
UPDATE-SOURCECOPY	(Batch Function)	58
4	Full overview of tasks completed in release 110	59

1 Notes for the SURE 110 release of October 2023

This document describes the major changes accomplished in all 110.x releases of the SURE software. The previous release was 110.4 (April 2023).

1.1 Introduction

Chapter 4 gives the complete overview of all changes that we made in release 110. Tasks that are only applicable for the SURE backend on Windows are marked as such. All other tasks are applicable for both backends, or for the SUREforWindows GUI.

Details about the installation and use of SURE backend on Windows can be found in document 'SURE backend on Windows – reference guide'.

1.2 Migration

Overview of previous releases:

Release	Release date	Migration	Data conversion	Database reorganization
90.x	November 30, 2019	80.x → 90.x	Yes	No
100.x	April 19, 2021	90.x → 100.x	No	No
110.x	October 8, 2023	100.x → 110.x	Yes	No

Currently the software is compiled with the MCP-601 compilers and the MCP-631 compilers. You may encounter problems if you are running on a MCP level older than 601.

Each new release provides new features in the software. It is our intention to implement these new features seamless with the existing features and procedures. However, in some cases it is necessary to perform a database-reorganization and/or a data conversion.

- The last database reorganization was with release 50.0 in December 2001.
- The last previous repository-data-conversion was with release 100 in April 2021.

Programs of two successive releases are NOT (fully) compatible if a reorganization or conversion is necessary to migrate from one release to the other.

In some cases, it can be inconvenient for a site to install a new release, and then the site may decide to skip a release and to wait for a next release.

It is obvious that the required data-conversions and database reorganizations cannot be skipped. These conversions and reorganizations will automatically be executed in the correct order when a new software release is installed.

The following table shows how to migrate from one release to another:

From	To	How
90.x	100.x	See the notes of SURE release 100.
100 x	110.x	<p>RUN RESPECT/REPOSITORY ("UPGRADE-REPOSITORY")</p> <ul style="list-style-type: none">- Set the repository level to 110.1. <p>RUN RESPECT/REPOSITORY ("LOAD-MESSAGES E")</p> <ul style="list-style-type: none">- Load new and changed error messages. <p>RUN RESPECT/REPOSITORY ("LOAD-FORMATS E")</p> <ul style="list-style-type: none">- Load new and changed screens (used by OBJECT/RIS/MENU). <p>The last run date of each program is copied to a relation. The Drop-Down-Box definitions are improved.</p>

The standard installation procedure via RESPECT/SETUP (with program RIS/INSTALL and job WFL/RIS/INSTALL) performs the correct data conversions.

1.3 Installing the mainframe software

Before you start with the installation, we advise you to:

- Read the list with completed tasks.
- Contact ITSforSURE, to make sure that we are available for support.

1.3.1 Install new objects and upgrade/create a repository

This procedure performs the following actions:

- Copy the objects from the container file and install them in the correct object-location.
- Do the necessary data conversions in the repository.
- Load the new screens and messages in the repository (these are used by the mainframe software).

Read document "Installation of SURE.doc". This document gives detailed information about the installation procedure.

Log on to Cande with a usercode that is equal to the usercode of the repository that you want to create or upgrade (So, if you want to create/upgrade a repository under usercode XYZ then log on to Cande with usercode XYZ).

The MCP software is delivered via a wrapped and zipped container file:

- The name of the container file contains the MCP version and the SURE version:
 - o For example: container file SURE110MCP631 contains the SURE objects of release 110 that run on the MCP. The objects are compiled with the MCP-63.1 compilers with a DMS-63.1 version of the INFDB-descriptionfile.
- Choose the correct containerfile based on your current MCP level.
 - o If your current MCP level is 59.1 or 60.1 then use container file SURE110MCP601.
 - o If your current MCP level is 62.1 or 63.1 then use container file SURE110MCP631.
- The container file must be downloaded from the Internet.
- File transfer the container file to the mainframe with binary FTP.
- Unwrap the container file with restriction = false. The files are placed on disk under usercode INFRA.

Start the installation as follows:

- DO (INFRA)RESPECT/SETUP ON <install-pack>("<installation-pack>(PACK)")

The installation procedure is well described in the installation document.

RESPECT/SETUP initiates the installation program where the following questions have to be answered:

- Do you want to install a new repository or upgrade an existing repository?
- What objects do you want to install: the RESPECT software, the SURE Explorer interface or both?
- Where do you want to install the objects?
- What are the database family, the dmsupport family and the auditfile family?
- What is your current DMSII release level?
- What is the repository environment?

If you currently use release 80: read paragraph Task-0272-SURE in the notes of release 90 for the detailed steps how to upgrade your repository from 80.x to release 90.6 and then further.

1.4 Compatibility

Refer to the list of frequently asked question on our website www.itsforsure.nl for the last remarks about compatibility.

1.4.1 Database compatibility

The Download Website contains two wrapped container files with SURE mainframe software.

The only difference between these three container files is that the software is compiled with different versions of the ALGOL compiler and different versions of the INFDB description file.

The layout of database INFDB is not changed since December 2001. The only different between the description file versions is that they are compiled with different versions of the DASDL compiler.

Container file	Compilers	DESCRIPTION/INFDB
SURE110MCP601	MCP 601 DMALGOL compilers	Created with DASDL compiler of MCP 601
SURE110MCP631	MCP 631 DMALGOL compilers	Created with DASDL compiler of MCP 631

We upgrade the original INFDB description file for each MCP release and keep the upgraded description file as RELEASE/DESCRIPTION/INFDB/INFRA/DMSxx

This sequence of original description files is also added to the release container file:

```
LFILE (INFRA)RELEASE/DESCRIPTION: RELEASEID
#RUNNING 6936
#?
ON IDR
(INFRA): DIRECTORY
. RELEASE: DIRECTORY
. . DESCRIPTION: DIRECTORY
. . . INFDB: DIRECTORY
. . . . INFRA: DIRECTORY
. . . . . DMS60 : DASDLDATA RELEASEID="INFDB_2_DMS601"
. . . . . DMS62 : DASDLDATA RELEASEID="INFDB_2_DMS621"
. . . . . DMS63 : DASDLDATA RELEASEID="INFDB_2_DMS631"
```

Example

- Container file SURE110MCP601 contains SURE software that is compiled with a DMS-60 version of the descriptionfile. To run this software it is required that your INFDB is upgraded to DMS level 60.1 or 61.1.
- The layout of the INFDB is not changed, so there is no database reorganization required. That means that an object which is compiled against the DMS-60 version of the descriptionfile, still runs when the database is upgraded to level 61.

If you did intermediate database updates (for example to change packnames or areasizes of datasets), then newly delivered SURE software may fail with DMS-VERSIONERROR when you run it. In that case, it is necessary to do a 'dummy' database upgrade of your INFDB to make your database available for our newly compiled software. Refer to the SURE manual chapter 9.2.3 '(installation) SURE objects and database compatibility' for a detailed explanation why you get the version error and how to fix this.

1.4.2 Compatibility with MCP releases

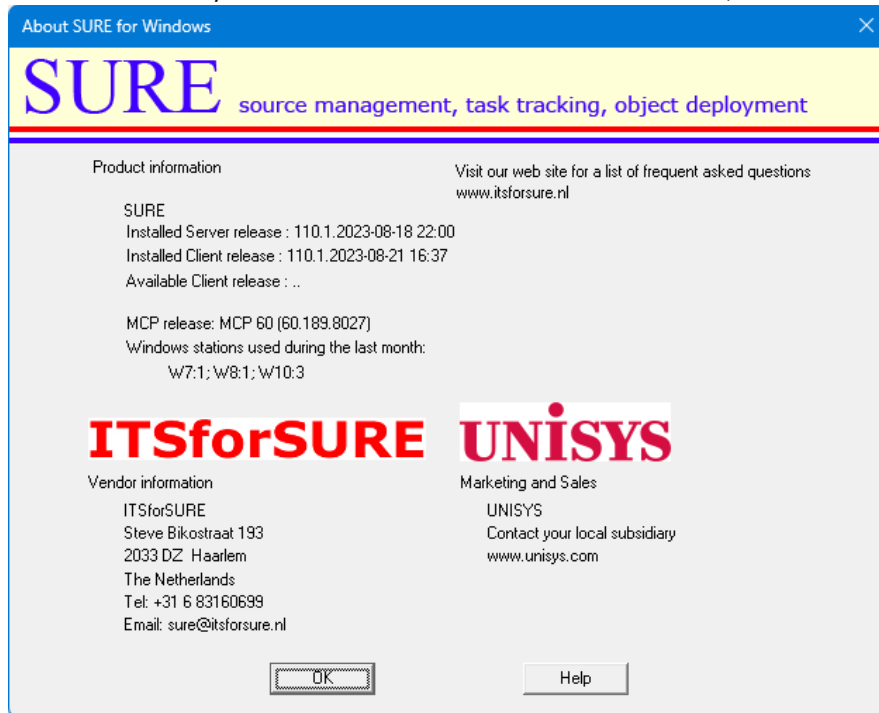
No compatibility issues were found.

1.4.3 Compatibility with previous SURE releases

The software consists of the following parts:

1. The SURE client software
2. The SURE server on the mainframe
3. Other SURE mainframe software (libraries and batch programs)

The release number of your installed software is found in the SURE GUI, via toolbar → help → about:



The above example screen shows two release numbers:

- The release number of the MCP software (110.1 compiled on Aug 18, 2023, at 22h00)
- The release number of the client software (110.1 built on Aug 21, 2023, at 16h37)

Both release numbers (MCP and client) consist of three parts:

1. The major release number (in this case 110)
 - We do not do any database reorganization or any data conversion inside the repository as long as the major release number remains the same.
 - There can be a database reorganization or data conversion between two major releases.
2. The minor release number (in this case 1)
 - The minor release number guards the compatibility between the client and server within a major release.
 - Sometimes we must make a modification on the client side and on the server side to solve an issue, and then we upgrade the minor release number.
 - In other cases, we only have to modify something on the client side or on the mainframe side, and then the minor release number is not raised.
3. The compile/build timestamp.
 - The timestamps are the moments of the compilation of the mainframe software and the build of the client software.

Compatibility of the Client software:

The SURE client is only compatible with the SURE server on the mainframe if the major release number and the minor release number are equal.

Example

SURE client	SURE server	Compatibility
110.1	100.3	No, because the major release number is different.
110.1	110.0	Partly, because the minor release number is different. Most functionality will still work but the interface layout of some functions is changed.
110.1	110.1	Yes.

Compatibility of the Mainframe software:

SURE on the mainframe consists of three parts:

- Database INFDB
- The SURE server OBJECT/RIS/API/=
- SURE libraries and batch programs OBJECT/RESPECT/= and OBJECT/RIS/=

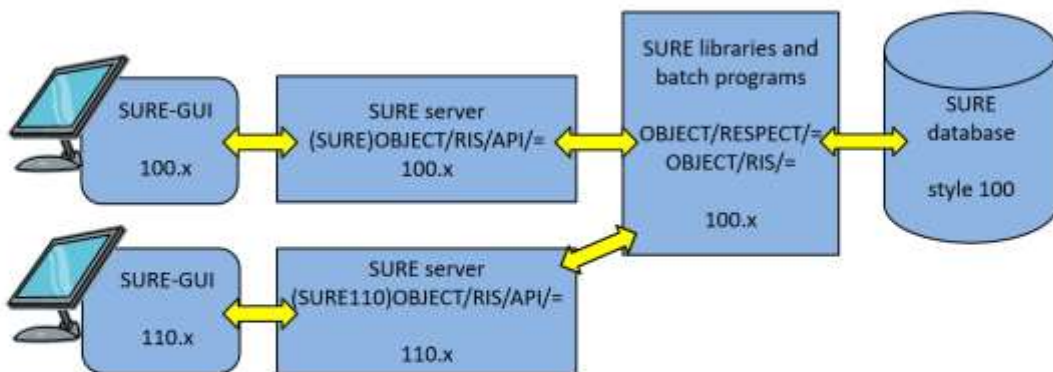
The following compatibility rules apply:

- A 100 style INFDB is compatible with the 100.x libraries and batch programs.
- A 110 style INFDB is compatible with the 110.x libraries and batch programs.
- The 110.x SURE server is compatible with the 110.x and 100.x libraries and batch programs
- The 110.x SURE server is only compatible with the 110.x SUREforWindows GUI.

Possible configurations

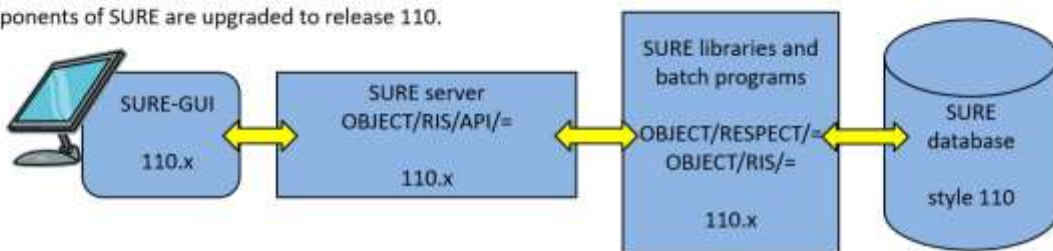
Possible temporary configuration:

- SURE release 100 is still active
- SURE release 110 is available for some users as a pilot.
- In this case the SURE-110 server cannot be located under the same usercode/pack as the SURE-100 server.



Final configuration:

- All components of SURE are upgraded to release 110.



The style of database INFDB is set by program RESPECT/REPOSITORY ("UPGRADE-REPOSITORY").

- Don't run this program when release 110 is installed temporarily as pilot for some test users.
- Run this program when release 110 is installed permanently for all users.

1.4.4 Compatibility with Windows versions

The SURE client is tested under Windows-8, Windows-10, and Windows-11.

The SURE client configured as SURE build server is tested under Windows Server 2008, 2012 and 2016

No compatibility issues were found.

1.5 Upgrading the SURE software to release 110.x

There are several ways to upgrade to a newer release. Read the installation manual for details. The preferred method is as follows:

Upgrading the SURE server software and the repository:

- ?DISABLE the SURE Explorer interface on the mainframe.
- Install the new SURE Explorer interface software on the mainframe **under the same usercode and with the same port-number** as where the old SURE Explorer interface software is resident. This overwrites the old SURE Explorer interface on the mainframe.
- Install the new general objects, and upgrade database INFDB to style 110 using the installation job WFL/RIS/INSTALL.

Upgrading the SURE client software:

- Install the new client software on each workstation with an **upgrade installation**. This overwrites the old client software on the workstation.
- When all workstations are upgraded: ?ENABLE the SURE Explorer interface on the mainframe.

1.5.1 Automatic upgrade feature of the client software.

The automatic upgrade feature of the client software checks the current version of the client software with the available version of the client software. If both versions are not the same, an installation screen is presented.

Detailed information

Updating the SURE client software may require effort when having a large network. For this reason, SURE supports different styles of installation:

- a) Local client installation on each applicable workstation
- b) Server based installation with personalized options
- c) Full server installation.

Server installations (options b and c)

In the case of a server installation, the SURE client software is placed on a central server that is accessed by the workstations of the developers. Because of this central installation, a software update is reasonable easy to install for the first time. Upgrading a server installation to a newer SURE release requires a few extra steps. The tradeoff for a server installation is that the network throughput must be sufficient (100KBS). It does not support wide area networks with a low bandwidth.

Local client installations (option a)

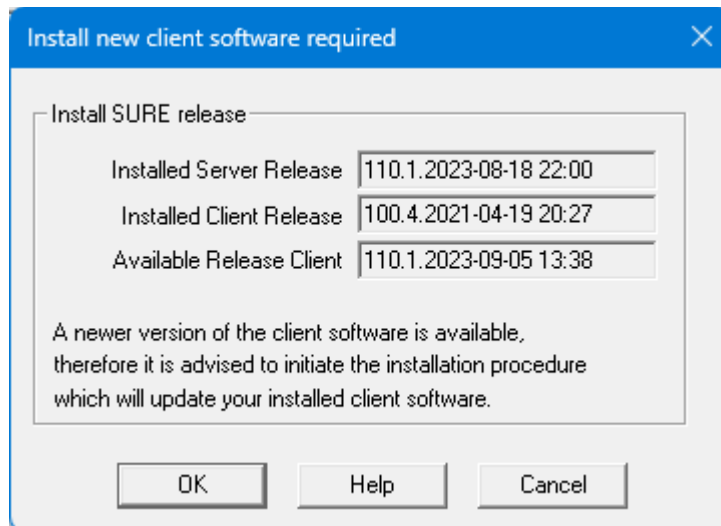
In the case of a local client installation, the SURE-PC-software is placed on the workstation of a developer. Installing the SURE PC-software as a local client is very easy for initial and upgrade installations. The tradeoff is that it is difficult to synchronize the upgrade to a newer SURE release when the SURE client software is installed locally at many workstations.

Solution

SURE can check the version of the PC-software at logon time and may initiate a local client installation. This combines the benefits of an easy local client installation with the benefits of a synchronized server installation.

Example

The following dialog is shown after logon when the versions of the installed client release and the available release for the client do not match.



This example screen describes the following situation:

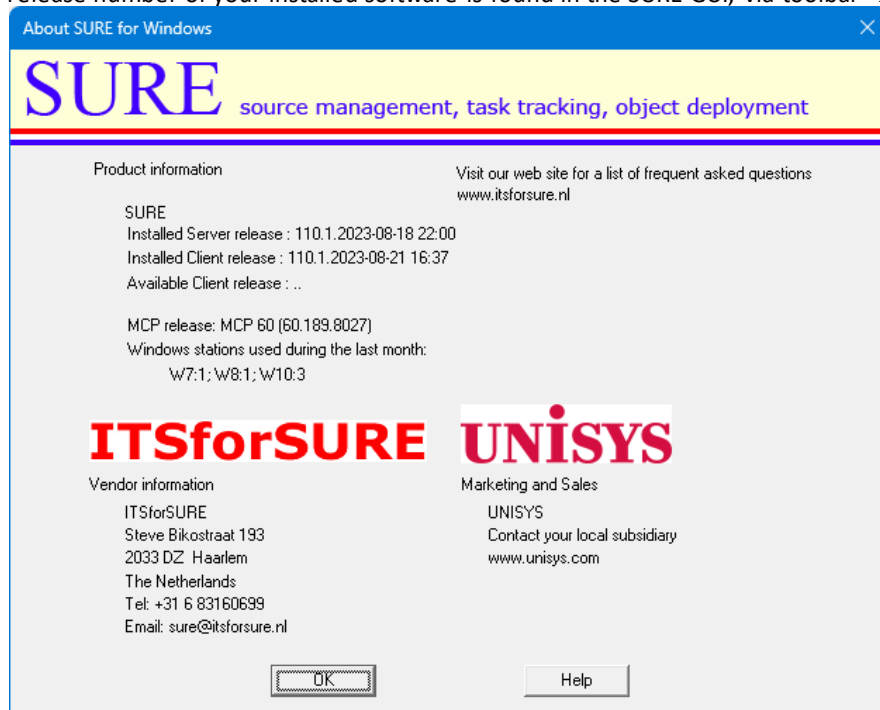
- The version number of the SURE server on the MCP is 110.1, built on August 18, 2023.
- The version number of the 'available' SURE PC software is 110.1, built on September 5, 2023
- The version number of the client software that is now installed on this workstation is 100.4.
- So, in this case the SURE server software is already upgraded to version 110.1 and the client software is still of the old release but can be upgraded via the 'available' client version.

Click OK to start the installation. This installs the available client software.

Click 'Cancel' to skip the installation, however the same message is then issued after the next logon.

- A possible reason to skip the automatic installation is for example when the developer works at home via a slow internet connection, and he does not want to upgrade his SURE-GUI via that slow connection. A solution is to upgrade the SURE-GUI later when he has a fast connection to the location where the new SURE-Client software is placed.
- It is possible to work with a SURE client that has another software version number than the SURE Server software, but some actions may issue an unexpected error message.

The release number of your installed software is found in the SURE GUI, via toolbar → help → about:



The above example screen shows two release numbers:

- The release number of the MCP software (110.1 compiled on Aug 18, 2023, at 22h00)
- The release number of the client software (110.1 built on Aug 21, 2023, at 16h37)

Both release numbers (MCP and client) consist of three parts:

4. The major release number (in this case 110)
 - We do not do any database reorganization or any data conversion inside the repository as long as the major release number remains the same.
 - There can be a database reorganization or data conversion between two major releases.
5. The minor release number (in this case 1)
 - The minor release number guards the compatibility between the client and server within a major release.
 - Sometimes we must make a modification on the client side and on the server side to solve an issue, and then we upgrade the minor release number.
 - In other cases, we only have to modify something on the client side or on the mainframe side, and then the minor release number is not raised.
6. The compile/build timestamp.
 - The timestamps are the moments of the compilation of the mainframe software and the build of the client software.

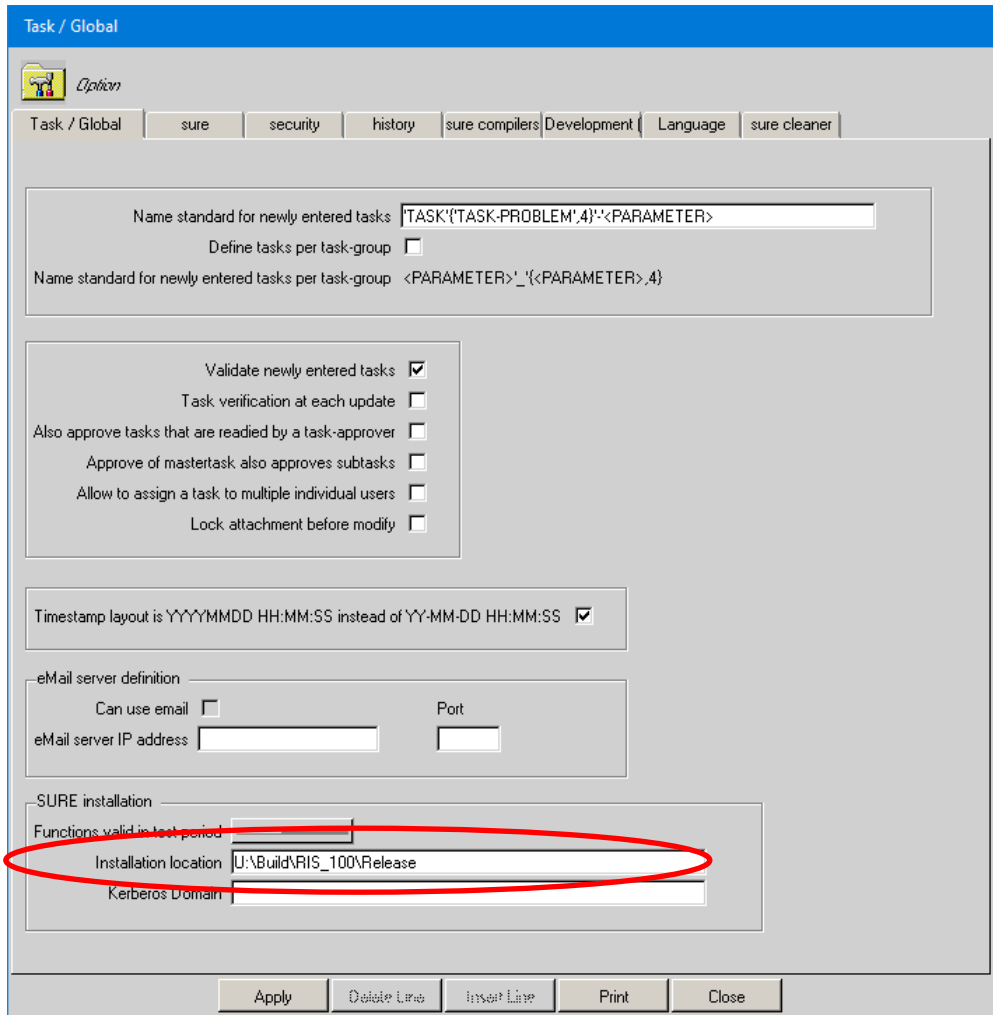
Technical details and considerations

The following procedure is required to trigger the automatic client installation.

The delivered SURE software package contains the SURE CP/NX modules and the SURE client modules. The two modules are compatible and have the same version number.

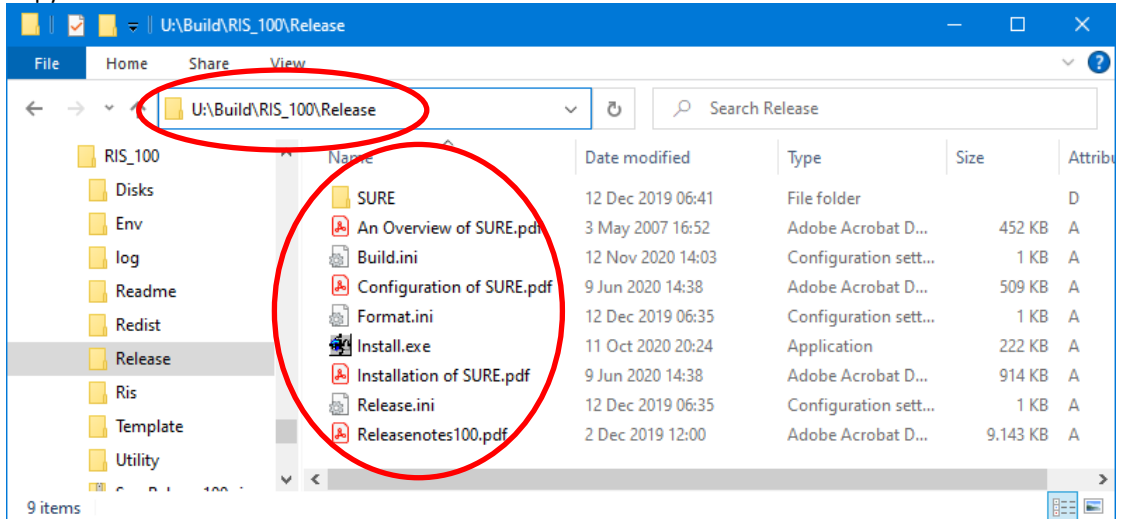
The entire installation consists of three steps:

1. Copy the new version of the SURE CP/NX software to the correct location on the mainframe.
2. Define the location of the available client software in SURE:
Global Options → field 'installation location'



The location of the available client software is in this example:
U:\Build\RIS_100\Release

3. Copy the new version of the SURE-PC-software to that location:



In this example, the SURE client software is available in directory 'U:\Build\RIS_100\Release'. This directory contains three files that control the version number of the release:

- Release.ini
 - o The number in this file defines the first part of the software version. This number is raised by one with every major release (about 1 time per two years).

- Format.ini
 - o The number in this file defines the middle part of the software version number. This number is raised by one if the layout of the interface between client and server is changed.
- Build.ini
 - o The date in this file defines the last part of the software version number. It is the build date of the software.

If any of the three files (step 3) is missing, or if the installed location (step 2) is not defined, then the automatic upgrade dialog is skipped.

1.5.2 Multiple installations of the SURE client on one workstation

It is possible to install multiple instances of SUREforWindows on one PC. Information about each SUREforWindows installation is kept in file RFW.INI in directory C:\ProgramData\ITSforSURE\.

The following example RFW.INI file contains information about two installations: an installation for the 'REND' repository and an installation for a 'DEMO' repository.

```
[GLOBAL]
APPLICATION1=SURE for Windows\REND
APPLICATION2=SURE for Windows\DEMO

[SURE for Windows\REND]
SETUP=SURE
DIRECTORY=C:\SURE\REND
INSTALLED3=SURE, 100.4.0, BASE, DOCS

[SURE for Windows\DEMO]
SETUP=SURE
DIRECTORY=C:\SURE\DEMO
INSTALLED3=SURE, 110.1.0, BASE, DOCS
```

Each instance of the SURE client should be installed in a separate directory.

In this example:

- The SURE client for the REND repository is installed in directory C:\SURE\REND\.
- The SURE client for the DEMO repository is installed in directory C:\SURE\DEMO\.

Multiple SURE clients in combination with the automatic upgrade feature

When a SURE client is installed for the first time on a workstation, the installation process asks for a program folder name. This program folder name is used for four purposes:

- Create a program folder in the Windows startup menu.
- This name becomes the title of the SUREforWindows client (in the title bar).
- This name is placed in the AW_OBJ.INI file ([global]title).
- This name is used as a key for the RFW.INI file.

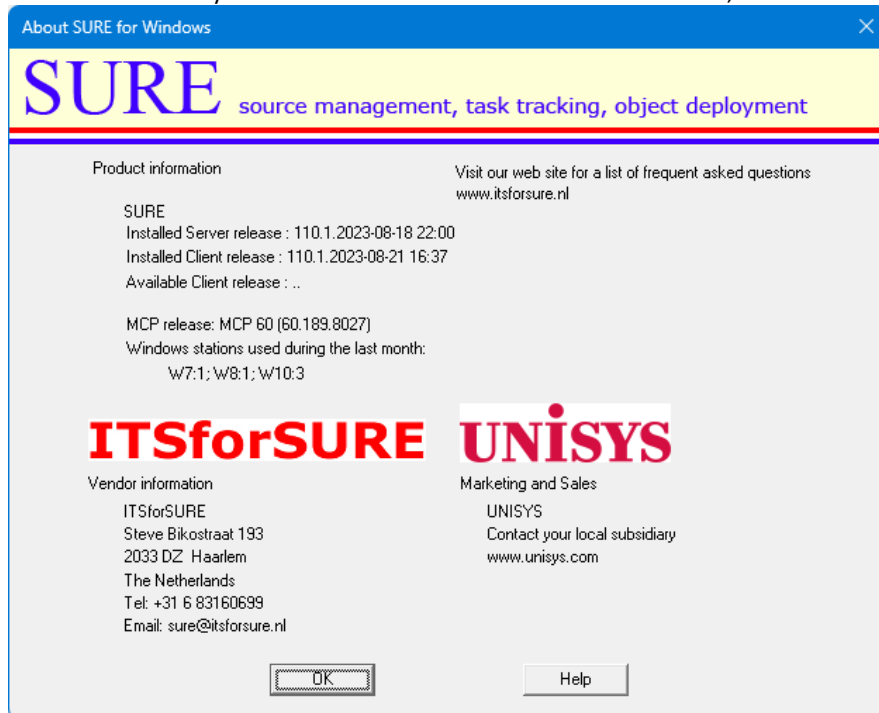
The automatic installation searches for an application with the program folder name in the RFW.INI file. If the program folder name is not found in the RFW.INI file, then the automatic installation is aborted with an error message. If the program folder name is found, then the software is installed in the directory that is defined for the program folder name.

Example

A user starts 'SURE for Windows\DEMO' and logs on. An automatic installation is required, and the user clicks on the OK button to start it. The automatic installation is started with parameter 'SURE for Windows\DEMO'. The automatic installation process opens the RFW.INI file and searches for application 'SURE for Windows\DEMO'. If that application is found, then the software is installed in the directory that is defined in paragraph [SURE for Windows\DEMO]. This is directory C:\SURE\DEMO.

1.5.3 About SURE release numbers

The release number of your installed software is found in the SURE GUI, via toolbar → help → about:



The above example screen shows two release numbers:

- The release number of the MCP software (110.1 compiled on Aug 18, 2023, at 22h00)
- The release number of the client software (110.1 built on Aug 21, 2023, at 16h37)

Both release numbers (MCP and client) consist of three parts:

7. The major release number (in this case 110)
 - We do not do any database reorganization or any data conversion inside the repository as long as the major release number remains the same.
 - There can be a database reorganization or data conversion between two major releases.
8. The minor release number (in this case 1)
 - The minor release number guards the compatibility between the client and server within a major release.
 - Sometimes we must make a modification on the client side and on the server side to solve an issue, and then we upgrade the minor release number.
 - In other cases, we only have to modify something on the client side or on the mainframe side, and then the minor release number is not raised.
9. The compile/build timestamp.
 - The timestamps are the moments of the compilation of the mainframe software and the build of the client software.

The About screen shows also:

- The current MCP release. In this example: MCP 60.1
- The Windows-releases of the workstations where the SUREforWindows GUI was used during the last month. In this example: 1 time Windows-7, 1 time Windows-8, 3 times Windows-10.

2 Features and improvements

A full list of all tasks that are completed during this release can be found at the end of this document.

2.1 Detailed descriptions of the most important new features, release 110.x

This chapter gives examples and details about the most important new features that were completed during this release.

The following information is given per task:

- Task description + detailed description
 - This describes the new feature plus the reason why the feature was implemented.
- Examples
- Optional: Technical details and considerations
 - This describes compatibility issues and gives tips and hints.

Task-1573-SURE Define Help-information for the screens under folder Datamodel

All screens under folder Datamodel have now a [Help] button in the right upper corner of the screen

Pressing [Help] gives information about all fields on the screen

Example

Right click on folder 'Transaction' → Refresh, gives the screen to select transactions:

Button [Help] gives the help information of function 'Select transaction'

Select

With this function you can select one or more transaction codes

Transaction code prefix The following selection methods are possible:

- Search on the full transaction name
- Search for all transactions (leave the field empty)
- Search for all transactions with the same prefix
- Search for transactions via a wildcard
 - o Wildcard '?' represents 1 character
 - o Wildcard '*' represents multiple characters
 - o Wildcard '=' (at the end) selects all transactions that start with the part before the '='

Trans type This is a filter: if entered then only transactions of that type are selected

Verb For RIS2 it is possible to search the transactions via the verb and/or subject:

Subject The following method are possible:

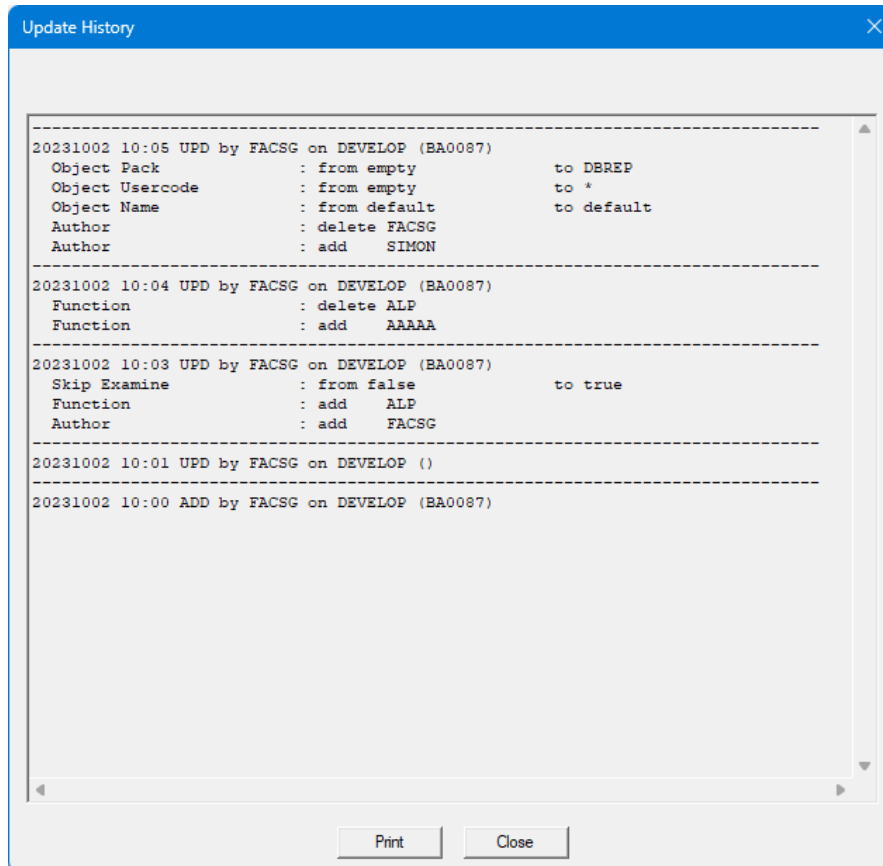
- If only the verb is entered: search for all transactions with that verb
- If only the subject is entered: search for all transactions with that subject
- If both are entered: search the transaction with that verb/subject

Clicking **OK** inserts the selected modules into the list, keeping the list in alphabetical order.

Task-1602-SURE Update properties: keep a log of the changes

SURE keeps now for each file a log of the properties that were changed via function Modify Properties. This log is never cleaned.

The log is visible via function: right click on the file → Miscellaneous → Update history



- The log shows the old and new value for each changed attribute
- The log can be printed via button [Print]

For RIS-users:

- If the properties of a RIS-module are changed then those changes are also logged, similar as how the changed file properties are logged.
- The log is visible via function: right click on RIS module → Update history

Task-1606-SURE Extra events in the SURE log when a task is transferred

SURE generates extra events in the SURE log when a task is transferred. The events can be intercepted in the SURE event library to create detailed overviews about the task transfer.

Using the additional log events, the following situations can be identified in the SURE event library:

- Multiple users can transfer tasks at the same time
- The transferred task can be a release task (or master task) containing multiple sub tasks

The following events are now passed to the Event Library when a task, a master task or a group of tasks is transferred

At the beginning of the transfer session:

```
Call SITE_EVENT with:
  owner = <empty>
  ,class = LOGUSER
  ,prog = "Xfer"
  ,func = "Transfer"
  ,environment = <destination-environment>
  ,task = <empty>
  ,group = PROBLEM
  ,user = <user-id>
  ,text = BEGIN-SESSION
```

At the beginning of a task:

```
Call SITE_EVENT with:
  owner = <task-name>
  ,class = LOGUSER
  ,prog = "Xfer"
  ,func = "Transfer"
  ,environment = <destination-environment>
  ,task = <task-name>
  ,group = PROBLEM
  ,user = <user-id>
  ,text = BEGIN-TASK
```

For each file or RIS-module (this event existed already and is also logged):

```
Call SITE_EVENT with:
  owner = <file or RIS-module>
  ,class = LOGUSER
  ,prog = "Transfer"
  ,func = "Transfer"
  ,environment = <destination-environment>
  ,task = <task-name>
  ,group = FILE-CONTROL or <RIS-module>-CONTROL
  ,user = <user-id>
  ,text = <variable text>
```

At the end of a task:

```
Call SITE_EVENT with:
  owner = <task-name>
  ,class = LOGUSER
  ,prog = "Xfer"
  ,func = "Transfer"
  ,environment = <destination-environment>
  ,task = <task-name>
  ,group = PROBLEM
```

```
,user = <user-id>
,text = END-TASK <number of files and RIS-modules that were transferred for this task>
```

At the very end of the transfer session:

Call SITE_EVENT with:

```
owner = <empty>
,class = LOGUSER
,prog = "Xfer"
,func = "Transfer"
,environment = <destination-environment>
,task = <empty>
,group = PROBLEM
,user = <user-id>
,text = END-SESSION <total number of files and RIS-modules that were transferred during this session>
```

The flow is as follows:

1. The transfer session starts always with an event with PROG = "Xfer" and TEXT = "BEGIN-SESSION"
 - Parameter USER gives the user who started the transfer session
2. A transfer of a task starts with an event with PROG = "Xfer" and TEXT = "BEGIN-TASK" and USER = <user of step 1>
 - Parameter OWNER gives the task name
 - Parameter TASK also gives the task name
3. A transfer of a file or RIS-module has an event with PROG = "Transfer" and FUNCTION = "Transfer" and TASK = <task of step 2> and USER = <user of step 1>
 - Parameter OWNER gives the filename or RIS-module
 - Parameter TASK gives the task name
 - Parameter GROUP is "FILE-CONTROL" in case of a file, and otherwise <RIS-module>-CONTROL
4. A transfer of a task ends with an event with PROG = "Xfer" and TEXT = "END-TASK" and USER = <user of step 1>
 - Parameter OWNER gives the task name
 - Parameter TASK also gives the task name
 - END-TASK is followed by the number of files and RIS-modules that were transferred for this task
5. The transfer session ends always with an event with PROG = "Xfer" and TEXT = "END-SESSION" and USER = <user of step 1>
 - END-TASK is followed by the total number of files and RIS-modules that were transferred during this session

The check on USER is necessary because multiple users can do a task-transfer at the same time.

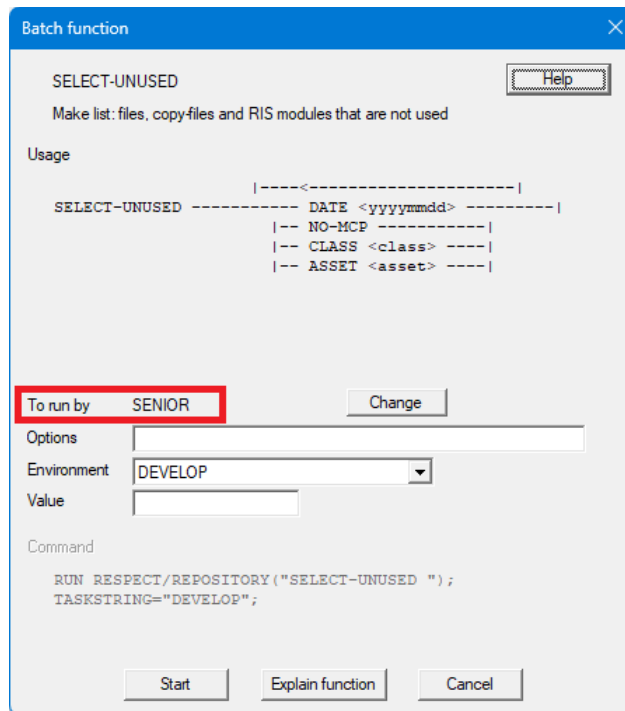
Task-1630-SURE Make each batch function only visible for users with right privileges

The list of batch functions is filtered based on the user's privileges.

The list of batch function is opened via function Toolbar → Tools → Server environment → Batch functions

A batch function can be linked to an employee function, to make that batch function visible for all users with that role. This makes it possible to hide batch functions for certain users and to make them visible for other users. Each user has their own list with available batch functions.

Example:



In this example: Batch function SELECT-UNUSED is visible for all users with employee-function SENIOR

The following filters apply:

1. Batch functions that have anything to do with users, teams, or the authorization mechanism of SURE are visible for:
 - a. If one or more users are defined as security administrator: the Security administrators.
 - b. If no user is defined as security administrator: the users with privilege 'Global: Securities'
2. The other batch functions are visible for:
 - a. The users with privilege 'Global: SURE maintenance' can see all other batch functions
 - b. The user without privilege 'Global: SURE maintenance' can only see the batch function that are linked to one of these roles.

Task-1636-SURE New method to handle the parameters of batch programs

Sometimes a batch program needs an input parameter in lowercase.

The old method: a token of an input parameter was automatically translated to uppercase if it was completely written in lowercase.

The new method: if a token is surrounded with extra single quotes, then it is not translated to uppercase. The surrounding quotes are automatically removed from the token.

Example

```
RUN RESPECT/REPOSITORY("TOKEN1 Token2 token3 'token4' ");
```

- TOKEN1 is already in uppercase.
- Token2 is mixed case, so it won't be translated to uppercase.
- token3 is completely in lowercase and has no surrounding single quotes, so it will be translated to uppercase.
- 'token4' is completely in lowercase and has surrounding single quotes, so it remains lowercase and the quotes are removed.

Task-1662-SURE Define a default project and file-type for a directory

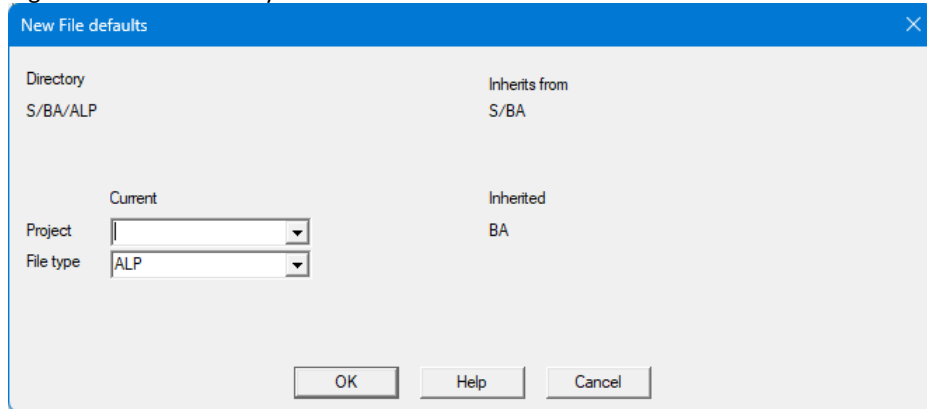
It is now possible to define a default project and file-type for a directory. When a new file is added to the directory then the defaults are pre-filled on screen 'Add new File'.

File-type and project are important in SURE because these file attributes determine how a source is compiled, and where the object is placed.

When a new source is added to SURE then it must get the correct file-type and project to improve a smooth introduction of the program in the run time environment.

Define the default attributes as follows:

- Right click on a directory → Set defaults for new files



Field	Example screen	Explanation
Directory	S/BA/ALP	The directory that was right clicked
Current project		The current setting of the default project for this directory
Current file type	ALP	The current setting of the default file-type for this directory
Inherits from	S/BA	The spanning directory from which the defaults can be inherited
Inherited project	BA	The inherited default project for this directory
Inherited file type		The inherited default file-type for this directory

- In this example:
 - o A default project BA is defined for directory S/BA and inherited by S/BA/ALP.
 - o A default file-type ALP is defined for directory S/BA/ALP.
 - o So, directory S/BA/ALP has default project BA and default file-type ALP.

It is possible to define defaults for a directory and to define other defaults for a subdirectory.

Enter a new MCP file via: Right click on an MCP directory → New MCP file

File :: New DEVELOP

File: /S/BA/ALP/

UserCode: FACSG TaskName: BA0087

Quick start: []

Filekind: []

Attributes:

Project: BA

Type: ALP

Function: []

Author: []

Domain: []

Short description: []

Local editing: Enabled

Buttons: Apply, Help, Cancel

Enter a new PC file via: Right click on a PC directory → New PC file

Add PC File :: Add PC File DEVELOP

File name: BA\ALP\

UserCode: FACSG TaskName: BA0087

Quick start: []

Format name by Server:

Check in:

Attributes:

Project: BA

Type: PC-ALP

Function: []

Author: []

Domain: []

Short description: []

Local editing: Enabled

Buttons: Apply, Help, Cancel

In both cases:

- The name of the directory is prefilled, you only have to complete that to the name of the file that must be added.
- The default project and file-type of the directory are prefilled on the screen.
- You still have the option to change the defaults.

SURE gives a warning if a new file is added with a file-type or project that differs from the default. You have then the option to correct the input and use the default values, or to ignore the warning and add the file with deviating attributes.

Task-1670-SURE Review support for MCP data files that are loaded in SURE

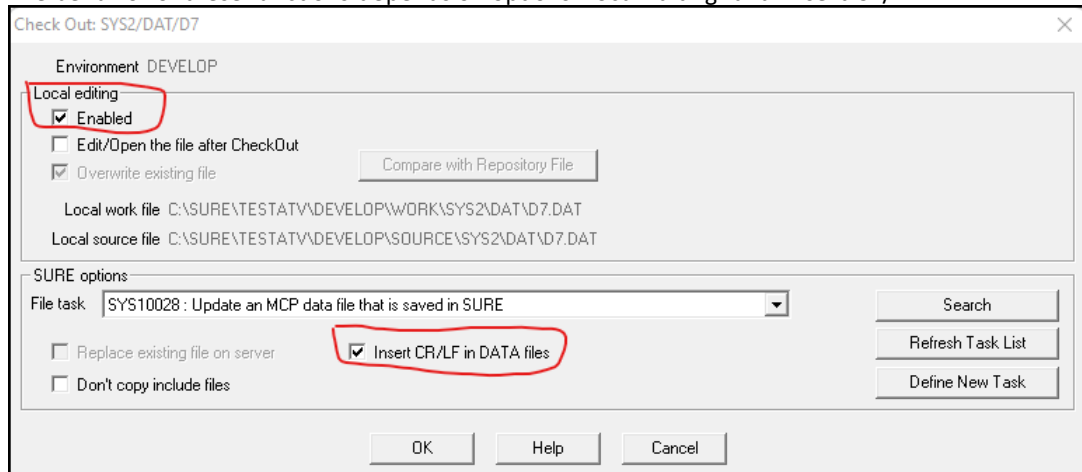
MCP data files can be loaded in SURE.

An MCP data file can be copied from SURE to the Windows platform with two different layouts:

- A carriage return plus line feed is placed behind each record in the local work file, so each record becomes a separate line in the local editor.
- All records in the data file are not separated by a CR/LF. The records are placed in the local work file behind each other as one long stream of data.

Check-out/Check-in MCP data file

The behavior of these functions depends on options 'Local Editing' and 'Insert CR/LF'.



In case of a multi check-out the options apply for all data files that are selected.

If 'Local Editing' is disabled:

- At check-out, the data file is placed in the users Cande directory with the same record size as how the file was previously loaded or checked in.
- The file can be modified via the Cande editor, or via Programmers Workbench, or via a program.
- In this mode it is also possible to change the record size of the data file.
- At check-in, the changed file is saved in SURE with its (changed) record size.

If 'Local Editing' is enabled and 'Insert CR/LF' enabled:

- At check-out, the data file is always copied from SURE to the local work directory on Windows.
- A carriage return plus line feed is placed behind each record in the local work file, so each record becomes a separate line in the local editor.
- The trailing spaces of the records are removed.
- At check-in:
 - o The CR/LF characters at the end of the lines are removed, and the data file is saved in SURE with the original record size.
 - o In this mode it is not possible to change the record size.
 - o Lines that are shorter than the original record size are filled up with spaces.
 - o Lines that are longer than the original record size are split and become two lines of that size.

If 'Local Editing' is enabled and 'Insert CR/LF' is disabled:

- At check-out, the data file is always copied from SURE to the local work directory on Windows.
- The trailing spaces of the records are not removed, so each record keeps its original size.
- All records in the data file are not separated by a CR/LF. The records are placed in the local work file behind each other as one long stream of data.
- At check-in:
 - o The data file can only be checked-in if the total file size is a multiple of the original record size.

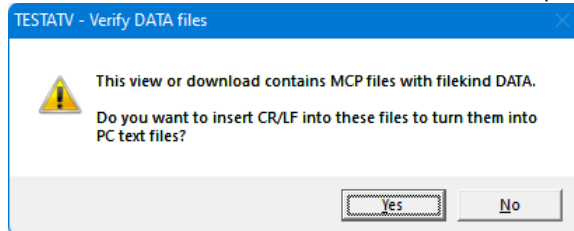
- The data file is split in records, each record has the original record size.
- In this mode it is not possible to change the record size.

View MCP data file

This function copies the file from SURE to the local source directory on Windows.

- Right click on the data file in SURE → View or Get Latest Version

SURE asks how the file must be downloaded: as a text file (with CR/LF behind each record) or not:

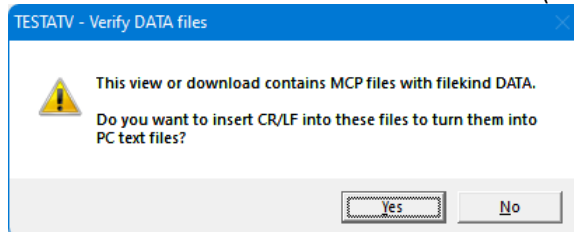


Download MCP data file

This function copies a file from the users Cande location to the download folder on Windows.

- Folder SURE Server → Sources → Right click on the destination directory → Download

SURE asks how the file must be downloaded: as a text file (with CR/LF behind each record) or not:

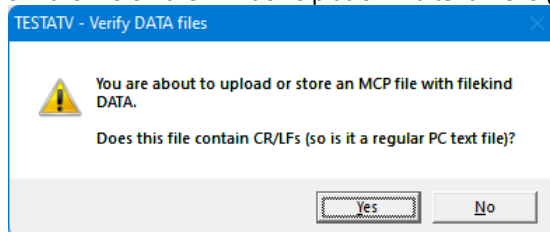


Upload MCP data file

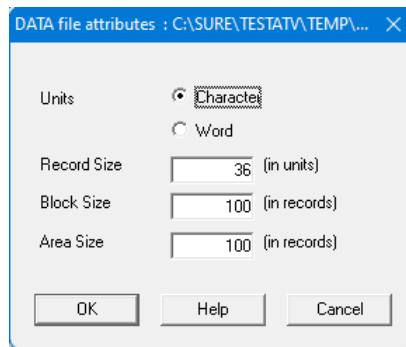
This function copies a file from the download folder on Windows to the users Cande location.

- Folder SURE Server → Sources → Right click on the destination directory → Upload file

SURE asks if the file on the Windows platform a text file is (with CR/LF behind each record) or not:



The user must enter the record size:



If the file is not a text file (with CR/LF behind each record) then the total file size must be a multiple of the record size.

Task-1673-SURE Show the review status on the task forms

The task form reports show review information about the linked files.

Example

Task		SYS10013		
TEST approve				
Status	SOLVED	Reported by	FACSG	
Type	TEST	Project	SYS1	
Received	2022/05/30	Opened at	2022/05/30	
Ready at	2022/06/30	Priority	C	
Description				
TEST approve				
Task History				
3.1	Entity FILE	Module SYS1/TEST_SUM14	Changes approved by FACFT at 20220530 16:52 in environment DEVELOP, Reference AAA000002. Remarks: prima	
			Changes approved by FACFT at 20220630 16:13 in environment TESTDEV, Reference AAA100013. No remarks	
Task log				
Date	Who	What	Function	Description
2022/06/30 16:13:24	FACFT	Transfer	Transfer	to NEXTREL (SOLVED)
2022/06/30 16:13:23	FACFT	Transfer	Transfer	to RELEASE
2022/05/30 16:53:58	FACSG	Transfer	Transfer	to TESTDEV

This is done for the following reports:

Toolbar → Reports

- Task forms (selection via a highlighted Macro)
- Task forms (selected tasks in browser)
- Task details form (of selected task in browser)

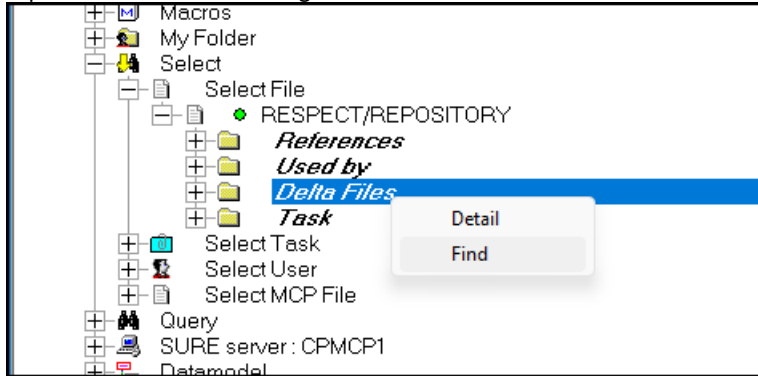
Task-1676-SURE Implement SURE Find in delta files

It is now possible to search through the delta files of a source. For example when you want to know what happened with a specific variable during a period.

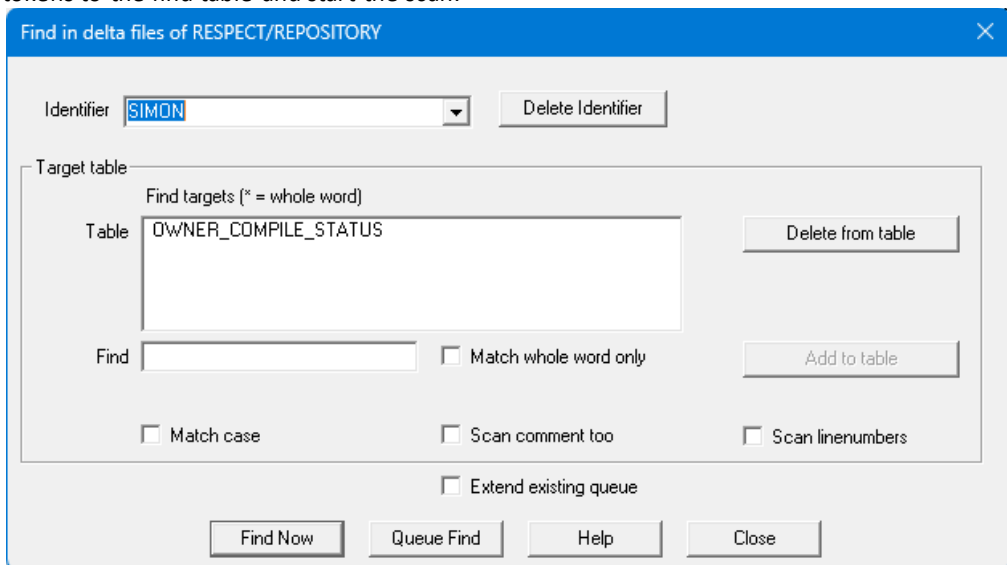
You can only use this function for one source per scan.

To start the SURE find in the delta files:

Expand the file-folder → Right click on folder 'Delta Files' → Find

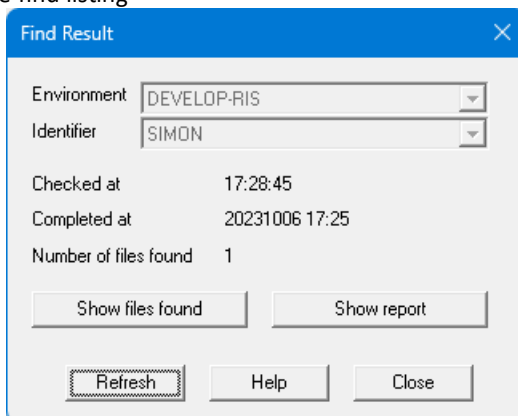


Add the tokens to the find table and start the scan:



The find table of this example contains 1 token: OWNER_COMPILE_STATUS

Open the find listing



- Press [Show report]

The find listing:

```

FIND : RESPECT/REPOSITORY (326.1)

          ,OWNER_COMPILED,OWNER_COMPILE_STATUS) THEN      81221000|SG132.390
          ,OWNER_COMPILE_STATUS);                          81255000|SG132.390
DEL_ALL_CLASS(ENV_TO,OWNER_FILE_CONTROL,OWNER_COMPILE_STATUS); 81703000|SG 18.349
          ,OWNER_TO_COMPILE,OWNER_COMPILE_STATUS);         82459000|SG 42.151
INFO_CLASS = OWNER_COMPILE_STATUS OR                      83358000|SG135.190
          ,V_OWNER,OWNER_NOT,OWNER_COMPILE_STATUS) THEN 84261000|SG132.190
INFO_CLASS = OWNER_COMPILE_STATUS THEN                    85228000|SG135.190
          ,OWNER_COMPILE_STATUS,V_GROUP_CTRL);           91552580|SG249.190
          ,OWNER_COMPILED,OWNER_COMPILE_STATUS) THEN     92913000|SG222.190
VADD_TYPE_RELATION(0,OWNER_COMPILE_STATUS ,OWNER_QUERY); 95067000|SG244.190

Delta: RESPECT/REPOSITORY (248.1 to 249.1) 2018-04-14 09:16:58
Task TASK-1019-RIS SURE backend on Windows: If a generation fails (not because of syntax error:

+          ,OWNER_COMPILE_STATUS,V_GROUP_CTRL);          91552580|SG249.190

Delta: RESPECT/REPOSITORY (221.1 to 222.1) 2017-09-20 07:01:56
Task TASK-0858-RIS Batch function DUMP-FOR-WIKI: the 'Last Run timestamp' of a of program sho

-          ,OWNER_COMPILED,OWNER_COMPILE_STATUS) THEN   86568347|SG222.190
+          ,OWNER_COMPILED,OWNER_COMPILE_STATUS) THEN   86607150|SG222.190

Selected files:1; found:1

```

- The listing starts with an overview where the token is used in the current source.
- It continues with the lines where the token appears in the delta files.
 - o For each delta file the task name is printed. This should explain the reason of the change
 - o For each line in the delta file: the full line which includes the mark-id with the initials of the developer, plus an indication if the line was added or deleted.

Task-1679-SURE Change the background color of the SURE browser

The background color of the SURE browse has always been 'bright white'. During the COVID period, where many developers worked from home, we received several questions about whether it was possible to change the background color.

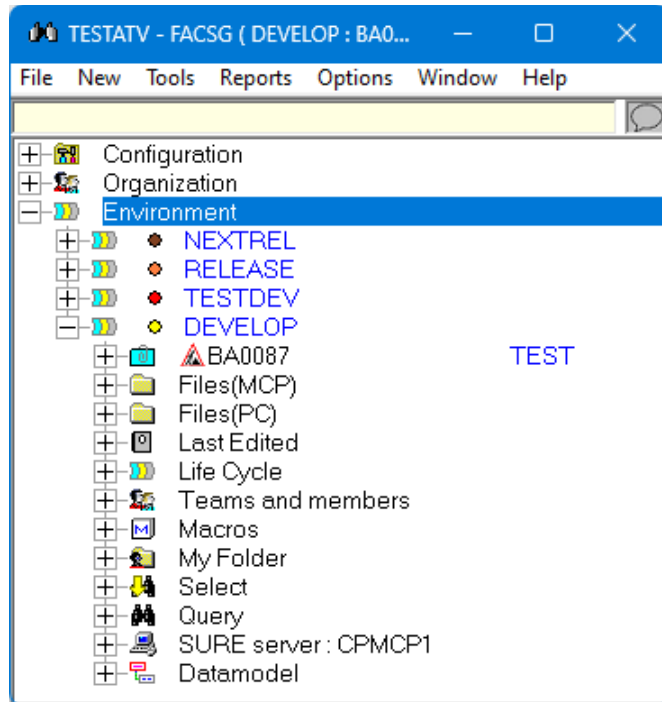
It is now possible to change the background color via the following option:

- Click on Toolbar → Options → SURE Options → Field 'browse color scheme'
- Restart the SURE client when you changed the color scheme.

Browse color scheme supports the following pre-defined background colors:

Normal

The old color scheme that we all know.

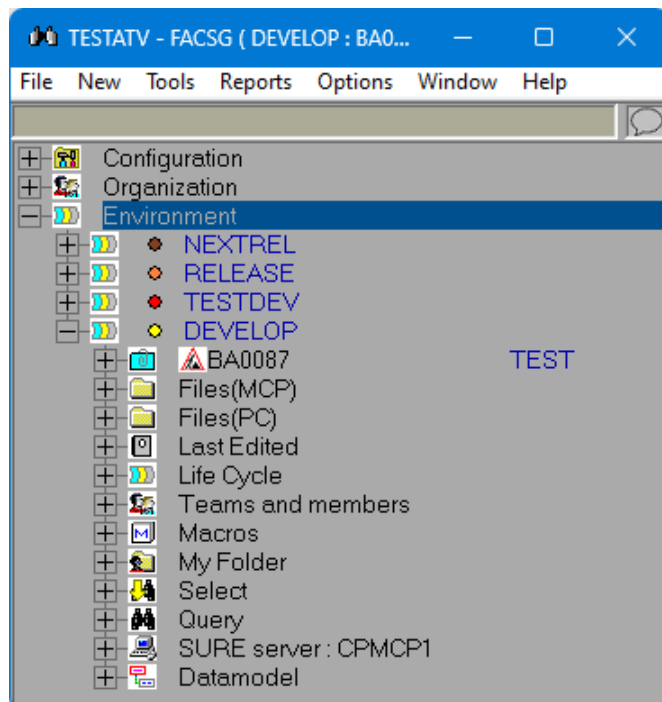


Dim

There is now a grey filter over the entire window, so all colors are a bit grey.

- White is light grey
- Black is dark grey
- Blue is blue grey

The colors of the icons remain unchanged.

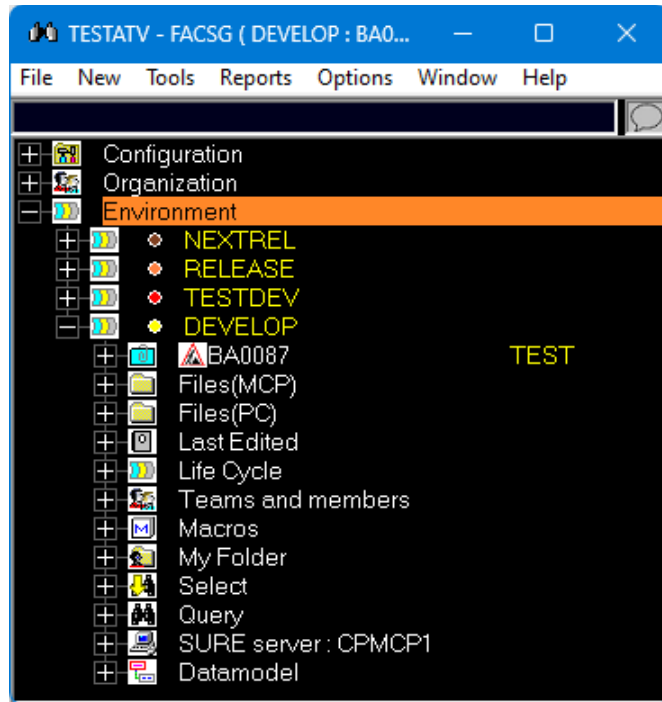


Inverse

Each color is translated to its reversed value:

- Black to white
- White to black
- Blue to yellow
- Et cetera

The colors of the icons remain unchanged.



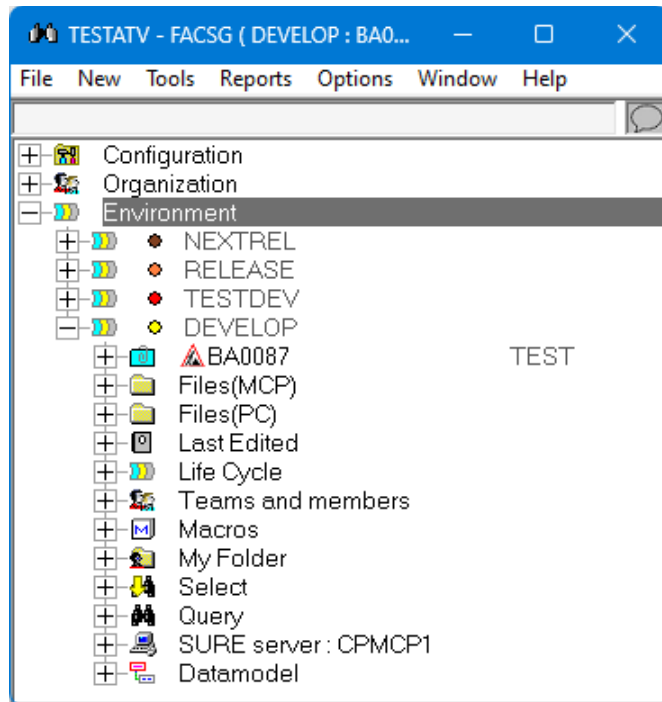
Grayscale

Each color is translated to its corresponding grayscale.

- White remains white
- Black remains black
- Blue becomes grey

For example: the task description has now a grey color.

The colors of the icons remain unchanged.

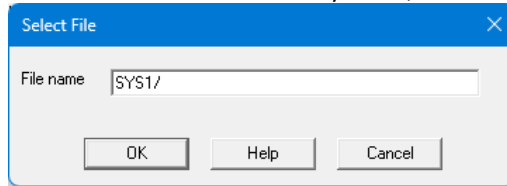


The colors of the pop-up screens are not changed.

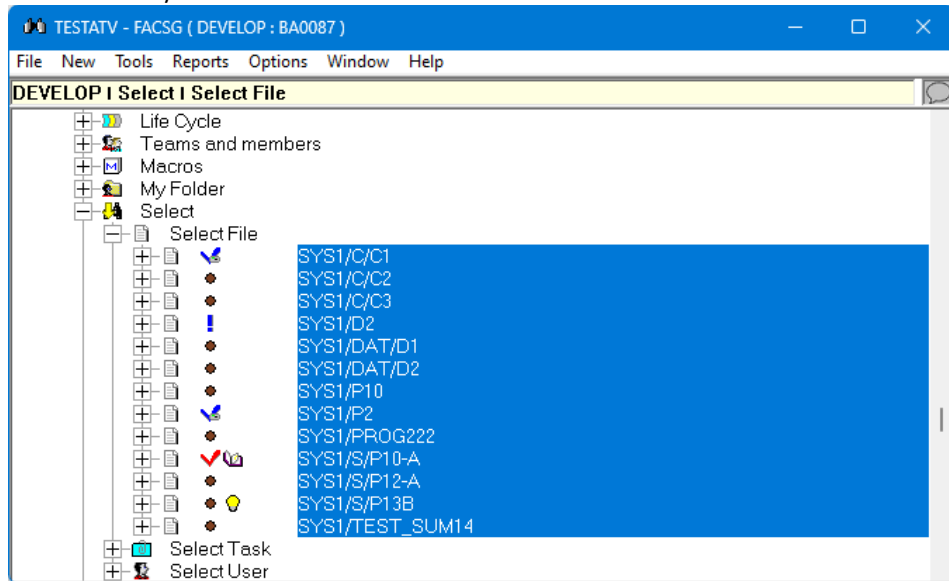
Task-1681-SURE Function Select file: allow to enter a directory name

It is now possible to select all files of a directory and its sub directories

Function Select File: Enter the directory name, followed by a slash or backslash



All files of that directory and its sub directories are selected:



Task-1690-SURE Use ClearPath Visual IDE as editor for MCP sources

Unisys ClearPath Visual IDE (CV-IDE) is a plugin for Microsoft Visual Studio 2017 or Microsoft Visual Studio 2019 to provide an integrated development environment to developers for creating projects, editing MCP symbol files, and building solutions using the familiar Visual Studio interface as they already use for C#, C++, ePortal, Agile Business Suite, and other languages.

It is possible to use CV-IDE in combination with SURE. The main features are:

- When an MCP file is checked out from SURE, that file is automatically opened in Visual Studio/CV-IDE.
- Compiling an MCP file from CV-IDE uses the compiler settings of that file as defined in SURE.

CV-IDE is a plugin for Microsoft Visual Studio for modifying MCP files. Visual Studio requires a solution file and project file, so using Visual Studio means that those files must be present.

If CV-IDE is defined in SURE as editor for MCP files, then the solution and project file are automatically created by SURE when an MCP file is checked out. SURE creates the solution and project file based on predefined templates.

The interface between SURE and CV-IDE work as follows:

SURE Function	Behavior
Check Out	<p>The source file is checked out and copied as MCP work file from SURE to the users Cande work location.</p> <p>The MCP work file is then copied from Cande to the workspace for Visual Studio as local 'xxx_m' work file (xxx_m is the file extension, where xxx depends on the filekind). Each local work file has its own separate workspace for Visual Studio. This file is a "placeholder", it must be present, but changes in this local work file are automatically synchronized with the Cande work file by the Visual Studio CV-IDE plugin.</p> <p>SURE creates a solution file and a project file, both in the same workspace as the local work file.</p> <p>If "Edit/Open" is selected, the solution file is opened in Visual Studio/CV-IDE, and the local work file is shown in its editor window.</p>
Edit	<p>This function is only available if the file is already checked-out.</p> <p>The solution file is opened in Visual Studio/CV-IDE, and the local work file is shown in its editor window.</p>
Local Compile	<p>The developer can start a local compile from Visual Studio/CV-IDE.</p> <p>If the build type in Visual Studio/CV-IDE is set to 'Custom build', then the compilation is executed by SURE job WFL/<environment>/COMPILE. This job uses the compilation parameters that are defined for the file in SURE, which includes binding, a deviating object name, a user defined post compilation process, et cetera.</p> <p>Read paragraph 'Local Compile started from Visual Studio/CV-IDE' details about the Build Type.</p>
Check In	<p>If the ini file (AW_OBJ.INI) contains option [CVIDE]CHECK=<lock file>, then SURE gives an error message if the local work file is still open in Visual Studio. The local work file must</p>

be saved in Visual Studio and the solution must be closed, so that the MCP work file is certain to be synchronized with the local work file.

The MCP work file is saved in SURE and removed from Cande.

If the ini file (AW_OBJ.INI) contains option [CVIDE]REMOVE=<subdir>, then the local files in this directory are removed. Currently, this option should be REMOVE=vs, as this .vs subdirectory of the workspace directory is created by Visual Studio/CV-IDE itself and contains a temporary file cache that can safely be removed along with the workspace.

Undo Checkout If the ini file (AW_OBJ.INI) contains option [CVIDE]CHECK=<lock file>, then SURE gives an error message if the file is still open in Visual Studio.

The MCP work file is removed from Cande.

If the ini file (AW_OBJ.INI) contains option [CVIDE]REMOVE=<subdir>, then the local files in this directory are removed.

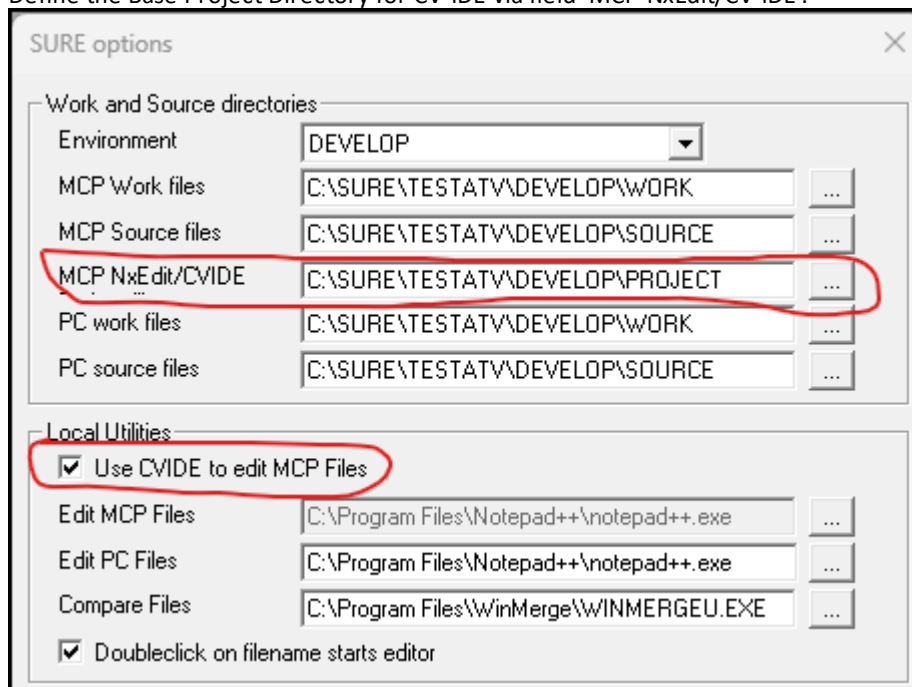
Configuration

Using CV-IDE in combination with SURE requires that templates for the Solution and Project files for Visual Studio are loaded in SURE. Once the templates are loaded in SURE they are available for all users and all MCP files. Read paragraph 'Templates for Solution and Project files' for details how to load the templates.

Each developer who wants to use CV-IDE must set the following local options via function:

Toolbar → Options → SURE options:

1. Enable SURE GUI option 'Use CV-IDE to edit MCP files'
2. Define the Base Project Directory for CV-IDE via field 'MCP NxEdit/CV-IDE'.



- About the project directory: read paragraph 'Workspace for Visual Studio' for details.

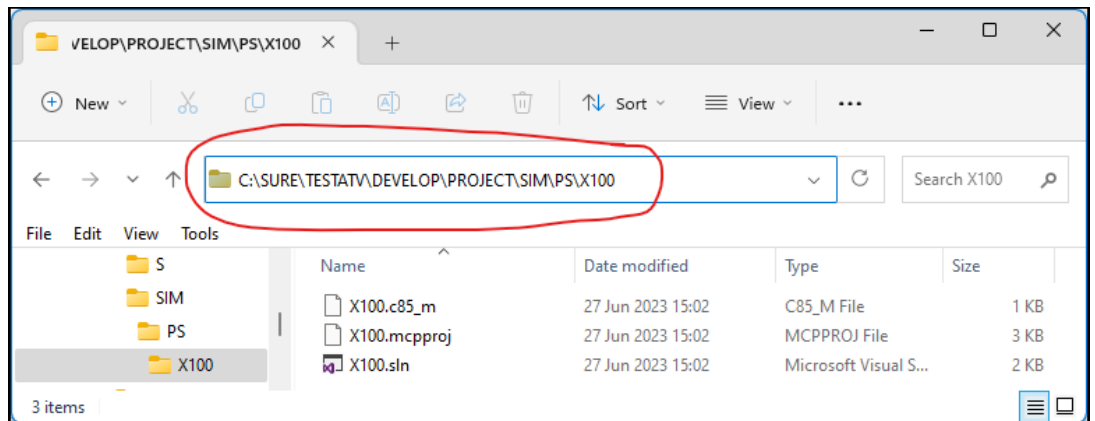
Workspace for Visual Studio

When a file is checked out, SURE creates a separate working environment for that file for Visual Studio. This separate workspace is a subdirectory of the Project Directory. The Project Directory is defined via Toolbar → Options → SURE options → field MCP NxEdit/CV-IDE.

The full name of the Visual Studio workspace of a file is: <Project Directory>/<file name>

Example

Suppose the Project Directory is defined as C:\SURE\TESTATV\DEVELOP\PROJECT, and Cobol85 file SIM/PS/X100 is checked out:



- The base project directory is C:\SURE\TESTATV\DEVELOP\PROJECT
- The file name is SIM/PS/X100, so the subdirectory is SIM\PS\X100.
- The Visual Studio workspace for this file: C:\SURE\TESTATV\DEVELOP\PROJECT\SIM\PS\X100
- The following files are created by SURE, based on the last node of the file name:
 - The solution file: X100.sln
 - The project file: X100.mcpproj
 - The local work file: X100.c85_m

Visual Studio creates additional files in the workspace when the solution is opened.

Local compile started from Visual Studio/CVIDE

When you are logged on to Cande, you have 2 options to compile a program:

1. Via Cande command COMPILE
 - This command only compiles the source
 - The default object name is OBJECT/<source-name> (unless you use COMPILE AS)
 - The object is created under your usercode
2. Via a job:
 - The main difference with the Cande COMPILE command is that a job can do **extra things**.

CVIDE offers two similar build types to compile a program: Default Build or Custom Build

Default Build is like the Cande COMPILE command:

- The object is created under your Cande usercode

Custom Build is like a Cande compile-via-job:

- SURE creates a CVIDE project file that uses compile job WFL/<environment>/COMPILE. This job does the following:
 - o
 - o If the compiled object must be bound into a driver, then start the binder

- If the compiled object must be marked with special MP commands (like PU, TASKING, EXECUTABLE, et cetera) then do that.
- If the compiled object must have a deviating name, then give it that deviating name
- If the compiled object must be copied to another location, then do that.

A developer can switch between Default Build and Custom Build via the project properties in Visual Studio.

The Build Type in the CVIDE project file (that is created by SURE at check-out) is determined by SURE based on the filekind of the source and the defined build type in SURE.

- If the filekind of the source is COBOL, COBOL74 , COBOL85, ALGOL, DMALGOL, or DCALGOL:
 - If the CVIDE templates are loaded in SURE with option DEFAULT-BUILD, then the build type in the CVIDE project file is 'Default'
 - If the CVIDE templates are loaded in SURE with option CUSTOM-BUILD, then the build type in the CVIDE project file is 'Custom'
- If the filekind of the source is **not** COBOL, COBOL74 , COBOL85, ALGOL, DMALGOL, or DCALGOL then the build type in the CVIDE project file is always 'Default'

Options in the AW_OBJ.INI file

The following options can be defined in the AW_OBJ.INI file to improve the integration between CV-IDE and SURE:

```
[CVIDE]
REMOVE=.vs
CHECK=.vs\<LASTNODE>\FileContentIndex\read.lock
```

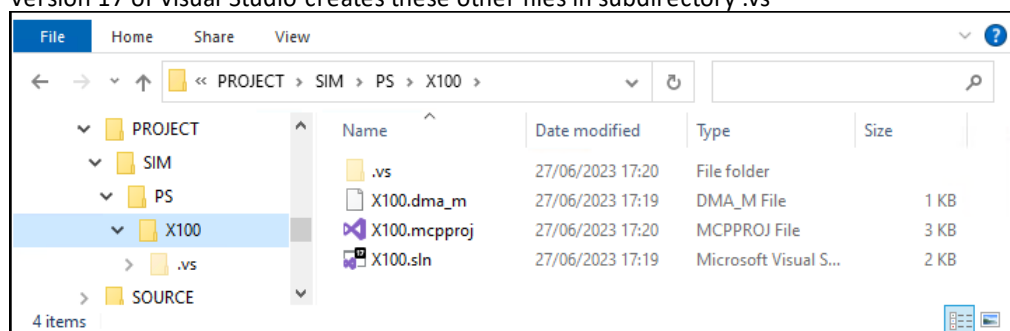
Option [CVIDE]REMOVE=<name of subdirectory>

The purpose of this option is to remove the Visual Studio workspace of the file after the file is checked in or when undo checkout is used, to keep the base project directory clean.

By default, the Visual Studio/CV-IDE workspace is **not** removed when a file is checked in.

Notice that all files in the workspace are temporary files and can be removed if the file is not in maintenance:

- The solution and project files are based on templates and will be (re)created at check out.
- The local work file is a copy of the MCP source that is checked out from SURE and placed in the user's Cande work environment: (<usercode>) ON <work pack>. If the local work file is lost, it can be recreated via CV-IDE from the MCP source.
- All other files are (re)created by Visual Studio when they are lost.
- Version 17 of Visual Studio creates these other files in subdirectory .vs



If this option is enabled, then the behavior at check-in is the same as when CV-IDE is not used.

If CV-IDE is **not** used the behavior is as follows:

- At check out: the file is copied from SURE to Cande.
- At check-in: the MCP work file is saved in SURE and removed from Cande.

If CV-IDE is used the following happens:

- At check out:
 - o The file is copied from SURE to Cande
 - o The MCP work file is then copied from Cande to the workspace for Visual Studio as local 'xxx_m' work file (xxx_m is the file extension, where xxx depends on the filekind).
 - o The solution and project files are created and copied to the workspace.
- At check-in:
 - o The local work file must first be saved in Visual Studio, to synchronize the MCP work file with the local work file.
 - o The MCP work file is saved in SURE and removed from Cande.
 - o If option [CVIDE]REMOVE=<subdirectory> is defined, then the following files are removed:
 - The solution and project files.
 - The local 'xxx_m' work file.
 - The <subdirectory> and all files in that subdirectory.
 - If the workspace is completely empty, then the workspace directory is removed too.
 - o If (another version of) Visual Studio creates extra files or subdirectories, then those names can be added as comma separated nodes in the [CVIDE]REMOVE=<subdirectory-or-file-1>,<subdirectory-or-file-2>... setting.

The benefit of this option:

- The Project Directory remains small. Only the files that are checked out from SURE have a workspace in the project directory.

Option [CVIDE]CHECK=<name of read lock file>

The purpose of this option is to check if the solution is still open in Visual Studio when SURE function Check-in or Undo Checkout is used.

Visual Studio creates a read lock file in the workspace when the solution opens for the first time and keeps that file locked as long as the solution is open.

- In Visual Studio 2019, the name of the read lock file is .vs\<LASTNODE>\FileContentIndex\read.lock
- <LASTNODE> is the last node of the MCP file.

If the option is defined and the solution is still open in Visual Studio when SURE function Check-in or Undo Checkout is used, then SURE gives the error message 'Solution is open in Visual Studio'.

If the name of the read lock file is changed in another (newer) version of Visual Studio, then the option must be changed in AW_OBJ.INI as well.

The benefits of this option:

- A developer cannot forget to save his work file in Visual Studio before he does the check-in.
- If the solution is closed, then none of the files in the workspace is in use. This means that the workspace can be removed after check-in or undo checkout (see option [CVIDE]REMOVE=<subdir>).

Templates for Solution and Project files

CV-IDE is a plugin for Microsoft Visual Studio for modifying MCP files. Using Visual Studio means that a solution file and a project file must be present. With CV-IDE, the solution file has extension SLN, and the project file has extension MCPPROJ.

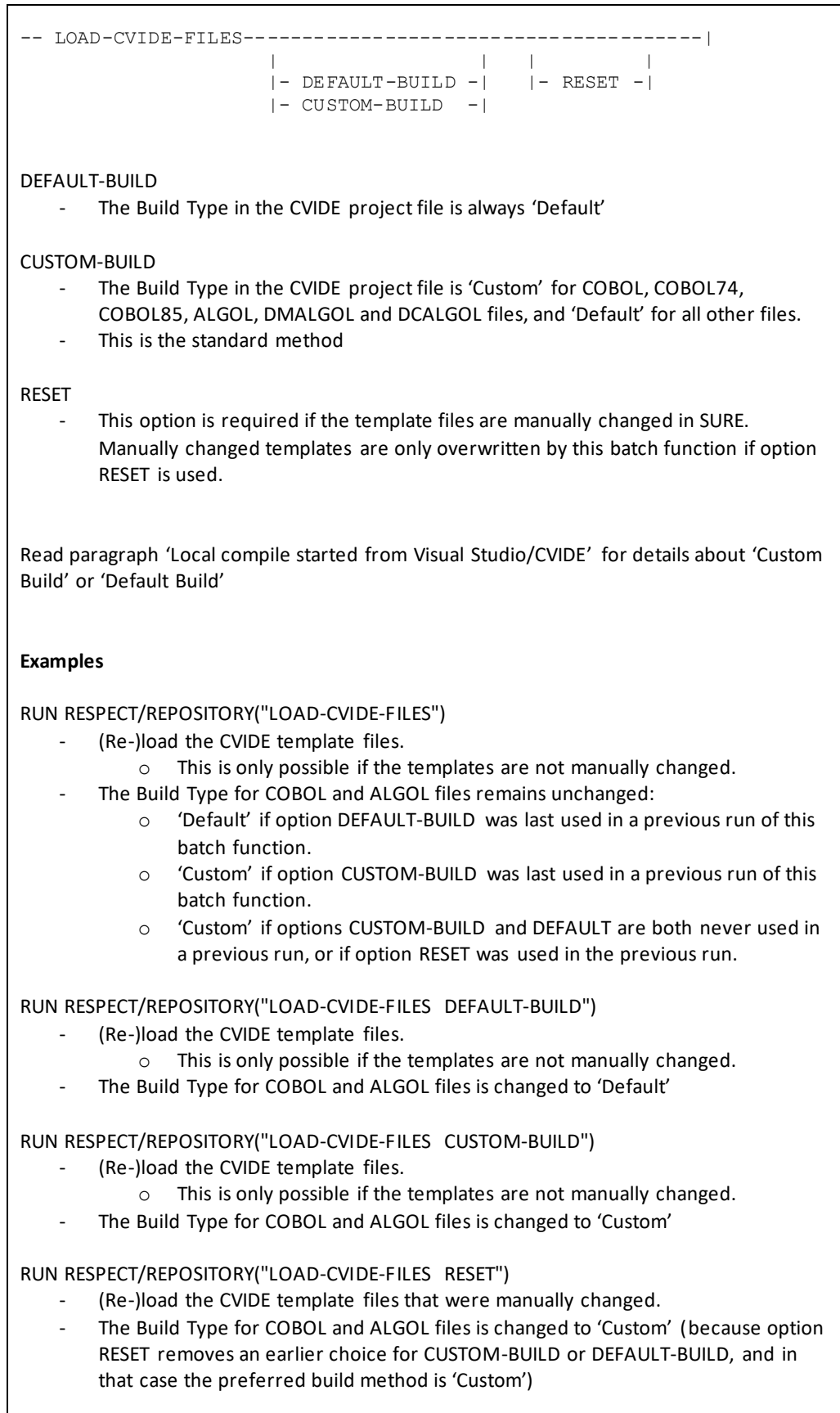
If CV-IDE is defined in SURE as editor for MCP files, then the solution and project file are automatically created by SURE when an MCP file is checked out. SURE creates the solution and project file based on predefined templates.

The templates must be loaded into SURE once via one of the following functions:

- From Cande: RUN RESPECT/REPOSITORY("LOAD-CVIDE-FILES")
- From SURE: Toolbar → Tools → Server environment → Batch functions → LOAD-CVIDE-FILES → Start.

Once the templates have been loaded into SURE, they are ready for use at check out.

The full railroad diagram of batch function RESPECT/REPOSITORY("LOAD-CVIDE-FILES"):



```
RUN RESPECT/REPOSITORY("LOAD-CVIDE-FILES  DEFAULT-BUILD RESET")
```

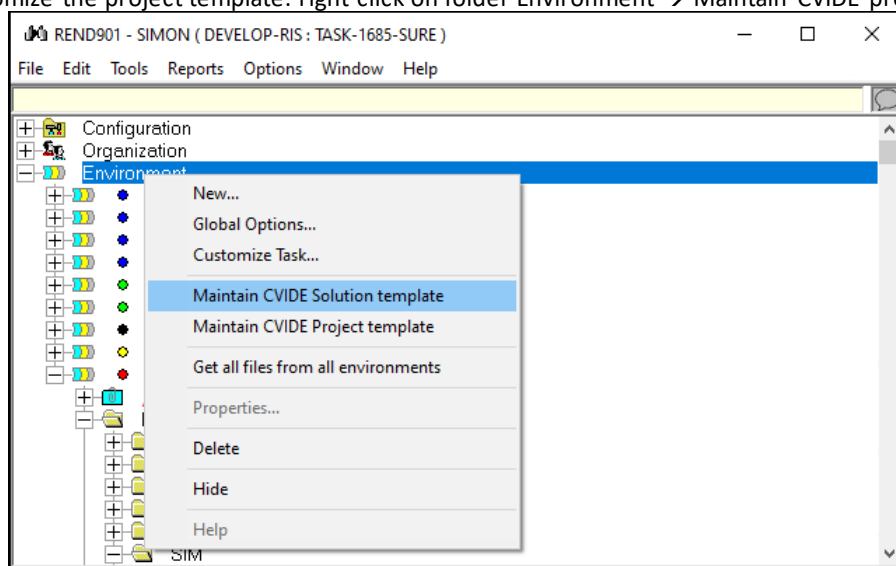
- (Re-)load the CVIDE template files that were manually changed.
- The Build Type for COBOL and ALGOL files is changed to 'Default'

Customizing the template files

The template files are generic and are used during check out of any MCP file to create the solution and project file for that MCP file.

It is possible to customize the Solution or Project Templates, and to reset them to their default content by running `RUN RESPECT/REPOSITORY("LOAD-CVIDE-FILES RESET")`.

To customize the solution template: right click on folder Environment → Maintain CVIDE solution template.
To customize the project template: right click on folder Environment → Maintain CVIDE project template.



- The content of the template is shown in a continuation screen where it can be changed.
- The two menu choices are only visible if option 'Use CV-IDE to edit MCP files' is enabled.

The templates contain some SURE tokens that are replaced by the actual MCP name, filename, username, et cetera, when the solution and project files are created.

The following SURE tokens are recognized:

SURE token	Replaced by
<HOSTNAME>	The name of the MCP where the file is checked-out
<PACK>	The pack name where the file is checked-out
<USERCODE>	The usercode where is file is checked-out
<ENVIRONMENT>	The SURE environment where the file is checked-out
<SOURCENAME>	The name of the checked-out file
<LASTNODE>	The last node of the file name
<EXTENSION>	The file extension of the local source that is loaded in CV-IDE
<OBJECTNAME>	The name of the compiled object (as defined in SURE)
<OBJECTPATH>	The path of the compiled object (all directories except the last node)
<SYSTEM>	The system of the file (as defined in SURE)
<PROJECT>	The project of the file (as defined in SURE)
<BUILD-TYPE>	The build type of the local compile: Default or Custom
<SUREPACK>	The family where the SURE batch programs are located
<COMPQUEUE>	The MCP queue that is used for compilations
<RSPTITLES>	The full name of config file RESPECT/TITLES (incl. usercode and pack)

Example

Suppose that cobol85 file SIM/PS/X100 is checked out in environment DEVELOP to usercode (SIMON) on pack PK1 at host CPMCP1. The object name is SIM/PO/X100.

The SURE tokens are then replaced as follows:

SURE token	Replaced by
<HOSTNAME>	CPMCP1
<PACK>	PK1
<USERCODE>	SIMON
<ENVIRONMENT>	DEVELOP
<SOURCENAME>	SIM/PS/X100
<LASTNODE>	X100
<EXTENSION>	c85_m
<OBJECTNAME>	SIM/PO/X100
<OBJECTPATH>	SIM/PO

Possible reasons to customize the template files.

The solution template:

- The current template creates a Visual Studio version 17 compatible file (for Visual Studio 2019). You may have to change the template's version if you use a newer version of Visual Studio with a newer solution version.

The project template:

- Tag MCPJobFilePath has value: ??<HOSTNAME>/<PACK>/*WFL/<environment>/COMPILE.
 - o This triggers for environment DEVELOP SURE compile job WFL/DEVELOP/COMPILE.
 - o You can change the value of tag MCPJobFilePath to the name of your own compilation job.
 - o In that case you also must change the values of tags MCPWfIParam and MCPJobFileErrorFileName.

Task-1695-SURE Improvements for Task Reference

SURE has the following options for Task Reference

1. Options to make task reference a required field for a specific environment.
2. Option to validate the entered task reference.

If the task reference is required for an environment, then it is not possible to transfer a task without a reference to that environment.

The task reference is visible (and changeable via a button) on the task transfer screen.

Options to make Task Reference a required field.

Option 'task reference required' must be enabled for the environment where the reference is required.

- If the option is enabled, then it is not possible to transfer a task without reference to that environment.
- Once the task has arrived at the environment, the reference cannot be turned off.

Example

Consider the following configuration and behavior:

Environment	Task reference required
DEVELOP	
TEST	
ACCEPT	yes
PROD	

- A task can be entered in SURE without a reference.
- The task can be transferred from DEVELOP to TEST without a reference.
- If the task is transferred to ACCEPT then the reference is required.
- If the task has status ACCEPT or status SOLVED (after transfer to PROD), then the reference cannot be emptied.
- If the task is reactivated to DEVELOP then the reference can be turned off, but then the reference must be turned on again at the next transfer to ACCEPT.

How to enable the option

Option Task Reference Required can be enabled at the following levels:

1. Environment
 - Right click on <environment> → Properties → tab Environment
 - The task reference is required when any task is transferred to that environment.
2. System on environment
 - Folder Configuration → System → <environment> → <system> → Right click on <system-project> → Properties.
 - The task reference is required when a task of that system is transferred to that environment.
3. Project on environment
 - Folder Configuration → System → <environment> → <system> → Right click on <project> → Properties.
 - The task reference is required when a task of that project is transferred to that environment.
4. File-type on environment
 - Folder Configuration → Task-type → Right click on <task-type> → Properties → tab Miscellaneous.
 - The task reference is required when a task with that file-type is transferred to that environment.

Option to validate the task reference that is entered on the screen.

The entered task reference can be validated via procedure SITE_TASKREF in the SURE site library.

The task validation is only enabled if the SURE site library is active and procedure SITE_TASKREF is exported in the site library.

The following is an example of procedure SITE_TASKREF where each reference number must start with 'ABC'.

```

STRING PROCEDURE SITE_TASKREF
    (S_SYS,S_PRJ,S_TPE,S_REF);
    VALUE  S_SYS,S_PRJ,S_TPE,S_REF;
    STRING S_SYS,S_PRJ,S_TPE,S_REF;
BEGIN
    % Use this function to validate the task-reference
    % Input:
    %   S_SYS = the task-system (if the reference depends on a system)
    %   S_PRJ = the task-project (if the reference depends on a project)
    %   S_TPE = the task-type (if the reference depends on the type)
    %   S_REF = the task-reference
    % Response:
    %   The procedure result = an error message if the reference is wrong
    % Example:
    %   DISPLAY ("SITE_TASKREF:!!S_SYS!!", "!!S_PRJ!!", "!!
    %           S_TPE!!", "!!S_REF);
    %   IF TAKE (S_REF!!" ",3) NEQ "ABC" THEN
    %       SITE_TASKREF := "Invalid task reference";
END;

EXPORT SITE_TASKREF;

```

Via the SURE site library it is also possible to do a call on another application system to verify the reference number.

Task-1701-SURE Use UltraEdit as local editor for MCP sources

UltraEdit is a powerful text editor and source code editor for use with Microsoft Windows. See the UltraEdit home webpage (www.ultraedit.com) for details.

UltraEdit can also be used in combination with SURE as the local editor for MCP sources.

The following configuration gives a smooth integration of UltraEdit with SURE and good support for MCP sources.

Configuration in SURE

Define UltraEdit as the Local Editor for MCP sources as follows:

Toolbar → Options → SURE options → tab: Local Options:

Field	Value
Edit MCP files	Enter the full name of the UltraEdit program (<path>\uedit64.exe)

Define the number for OLE-server (to be able to start a compilation from UltraEdit):

Toolbar → Options → SURE options → tab: Local Options:

Field	Value
OLE server id	Enter a number between 1 and 99. - If SURE is installed multiple times on a workstation, then each instance must have a unique OLE server id.

Configuration in UltraEdit

For most options, the default value (which comes with the installation) is fine, but a few options need attention to make things better.

Configure keyboard button [Tab] as 1 space:

- Toolbar → Advanced → Configuration → Navigate: Editor → Word wrap/tab settings:

Field	Value
Use spaces in place of tabs	Enabled
Tab stop value	1
Indent spaces	1

Reason: an MCP source file should not contain tabs.

Enable syntax highlighting for languages COBOL:

- Toolbar → Advanced → Configuration → Navigate: Editor displays → Syntax Highlighting:
- Click on button [Add/remove languages] to add COBOL and to remove unneeded languages.
- On the continuation screen:
 - o Enable language COBOL.
 - o Double click on the line with COBOL to open file cobol.uew with COBOL definitions.
 - On the first line (at the end): add file extensions C74 and C85.
 - Save file cobol.uew.

Optional: enable auto-complete for COBOL:

- Toolbar → Advanced → Configuration → Navigate: Auto complete → Intellitips → Miscellaneous:

Field	Value
-------	-------

Auto-complete text	Enabled
When ... chars are typed	8

- Toolbar → Advanced → Configuration → Navigate: Auto complete → Intellitips → File types:

Field	Value
Double click on the line with COBOL	Add extensions: .c74.c85.cpy

Reason: this can be handy, but it becomes annoying if the number of characters is low.

Enable the option to save the current file automatically when the desktop focus changes to another window:

- Toolbar → Advanced → Configuration → Navigate: Editor → Advanced:

Field	Value
Auto-save modified documents when application loses focus	Enabled

Reason: if this option is enabled then the changes in UltraEdit are automatically saved when you switch to another app. For example when you switch to SURE to do the check in. This improves the integration between SURE and UltraEdit

Enable the option to allow cursor positioning beyond the end of a line:

- Toolbar → Advanced → Configuration → Navigate: Editor display → Cursor / caret:

Field	Value
Allow positioning beyond line end	Enabled

Reason: just handy.

Add extra buttons on the toolbar:

- Click on the last icon of the toolbar (you will see 'Toolbar options') → Add or remove buttons → Customize:



- Select category 'Search'.
- Drag and drop command 'Previous changed line' to the toolbar.
- Drag and drop command 'Next changed line' to the toolbar.

- Another method is to change the toolbar to a ribbon.

Reason: this makes it easy to jump to locations in the source that are changed.

Enable the option to keep changed lines over an intermediate file save:

- Toolbar → Advanced → Configuration → Navigate: Editor display → Line change indicator:

Field	Value
Enable line change indicator	Enabled
Treat saved LCI's as changed lines	Enabled

Reason: This allows the developer to jump forwards and backwards in his source code to the places where he changed something, since the moment that the source was opened in UltraEdit.

Optional: disable the option to backup a file when it is saved:

- Toolbar → Advanced → Configuration → Navigate: File handling → backup:

Field	Value
No backup	Enabled

Reason: there is no reason to make intermediate backups.

Define the RUN command to start a Local Compile for the current source:

- Toolbar → Advanced → Tool configuration
- Press button [Insert] to define the command as follows:

- o Tab 'Command'

Field	Value
Menu item name	Compile
Command line	C:\SURE\RIS\BIN\AS_Comp.exe %f /O <OLE-number>
	- The full name of AS_Comp.exe
	- OLE-number is defined in SURE local options

- o Tab 'Options'

Field	Value
Program type	DOS program
Save active file	Enabled
Save all files first	Enabled
	- Because changed include files must be saved as well

Non-mentioned fields are not relevant.

To start the compilation: select the command from the menu under Toolbar → Advanced.

Define the RUN command to load the file with syntax errors for the current source:

- Toolbar → Advanced → Tool configuration
- Press button [Insert] to define the command as follows:

- o Tab 'Command'

Field	Value
Menu item name	Show syntax errors
Command line	C:\SURE\RIS\BIN\AS_run.exe /E /C /R:0:1 %f
	- The full name of AS_run.exe

- o Tab 'Options'

Field	Value
Program type	DOS program
Save active file	Disabled
Save all files first	Disabled

- o Tab 'Output'

Field	Value
-------	-------

Capture output	Enabled
Clear output before run	Enabled
Output to list box	Enabled
Replace selected text	No replace
Handle output as	ANSI

Non-mentioned fields are not relevant.

To load the syntax errors: select the command from the menu under Toolbar → Advanced.

Double click on a line with a syntax error in the output window to position the source file on that error.

Task-1709-SURE Implement SURE Site Library for the SURE Windows backend

It has been possible for a long time to define a Site Library for the SURE MCP backend. This is now also possible for the SURE Windows backend.

Currently the only supported function is `SITE_EVENT`. This feature can be used to intercept the SURE log events and then perform site specific actions on these events.

The sources of an example site library are delivered together with SURE Windows backend, in directory `Release\SiteLibrary`. It is a C++ project:

```
Release
  BIN
  DATA
  INSTALL
  SCRIPT
  SiteLibrary
    SiteLibrary.cpp
    SiteLibrary.sln
    SiteLibrary.vcxproj
    SiteLibrary.vcxproj.filters
  Web
  Install.bat
```

You can customize the source to your own needs, as long as the declaration of procedure `SITE_EVENT` remains unchanged.

- The original version of the site library (the one that is delivered) creates example file `C:\Temp\Temp.txt` and writes a record in that file each time when procedure `SITE_EVENT` is called. The content of that file may help you with your customization.

Activation of the site library

1. Copy directory `Release\SiteLibrary` to another location, so that your changes won't be overwritten when you install the SURE Windows backend software again.
2. Open `SiteLibrary.sln` in Visual Studio, make your changes, and build the project.
3. Copy the result (`SiteLibrary.dll`) to directory `SURESERVER\BIN\`, the same location where all other executables and dll's of the SURE Windows backend are placed.
4. Start the SURE Windows backend.
5. Open the SURE client and define the name of the site library.
 - a. Right click on folder Environment → Global Options
 - b. Open tab 'SURE'
 - c. Enter in field SURE Site Library: 'SiteLibrary.dll'
 - d. Press [Apply]
6. Stop and restart the SURE Windows backend.

Task-1710-SURE Use Notepad++ as local editor for MCP sources

Notepad++ is a popular (distributed as free software) text editor and source code editor for use with Microsoft Windows. It supports tabbed editing, which allows working with multiple open files in a single window. See the Notepad++ home webpage (www.notepad-plus-plus.org) for details.

Notepad++ can also be used in combination with SURE as the local editor for MCP sources.

The following configuration gives a smooth integration of Notepad++ with SURE and good support for MCP sources and/or MicroFocus-COBOL sources

Configuration in SURE

Define Notepad++ as the Local Editor for MCP sources as follows:

Toolbar → Options → SURE options → tab: Local Options:

Field	Value
Edit MCP files	Enter the full name of the Notepad++ program (<path>\Notepad++.exe)

Define the number for OLE-server (to be able to start a compilation from Notepad++):

Toolbar → Options → SURE options → tab: Local Options:

Field	Value
OLE server id	Enter a number between 1 and 99. - If SURE is installed multiple times on a workstation, then each instance must have a unique OLE server id.

Configuration in Notepad++

For most options, the default value (which comes with the installation of Notepad++) is fine, but a few options need attention to make things better.

These options are stipulated in the following paragraphs.

Install the SURE MCP Source Editor plugin

ITSforSURE has created a plugin to improve the support for MCP source files with filekinds COBOL, ALGOL, and JOB. The plugin can be found in the SUREforWindows BIN directory

The SUREforWindows BIN directory = <SURE installation directory>\RIS\BIN\

The MCPSourceEditor plugin has the following functionality:

- The plugin works for sources with file extension C74, C85, COB, CBL, DMA, DCA, ALG, or JOB.
- Jump quickly forwards or backwards to the changes that you made in the source.
- Automatically create the new sequence number (length 6 for COBOL, length 8 for ALGOL and WFL) for new lines in the source.
 - o When a new line is created via the enter button
 - o When lines are copied or moved to another place in the source (copy/paste special)
- Resequence a part of the source.
- A warning (color) when text is typed after position 72 (COBOL), 80 (ALGOL), or 88 (WFL).
- Start a compilation on the MCP of a source that is opened in Notepad++.
- If the file has syntax errors: show the error file and position the source automatically on the line with the syntax error.
- Short keys and toolbar icons are available for all these functions.

Example

```

1 000000* VERSION 2.2 * SAVSD_20220409 14:26:38
2 001100 IDENTIFICATION DIVISION.
3 001400 PROGRAM-ID.                BAALP0015.
4 001900
5 002000 ENVIRONMENT DIVISION.
6 004210
7 004220 DATA DIVISION.
8 006200 WORKING-STORAGE SECTION.
9 008800 77 RECORD-SIZE              PIC 9(06).
10 010600
11 010800 PROCEDURE DIVISION.
12 010900 ALCO-HAIN SECTION.
13 011600 ALCO-01.
14 012080 DISPLAY "Greetings from Amsterdam".
15 012100 ALCO-99.
16 013200 STOP RUN.
17

```

- The icons for functions re-sequence, compile, jump to changed lines, and show syntax errors are placed on the toolbar.



Open the error file and show the syntax errors.



Compile the source on the MCP. If syntax errors are found, then the error file is automatically opened.



Jump backwards in the source to the previous changed line (since the source was opened in Notepad++).



Jump forwards in the source to the next changed line (since the source was opened in Notepad++).



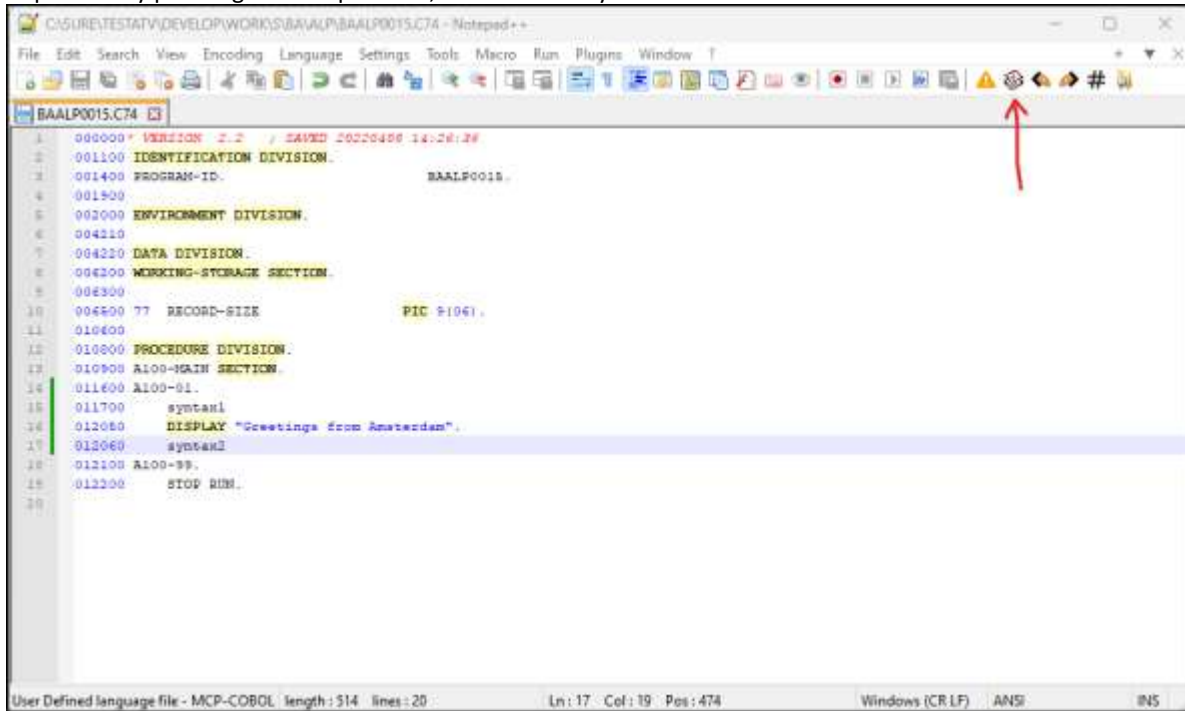
Resequence the selected lines.

- The available short keys are listed under Menu bar → Plugins → MCP source Editor

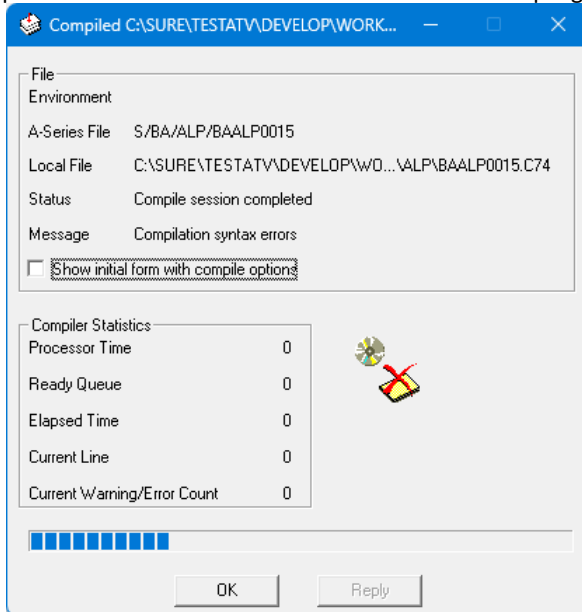
CTRL-ALT-C	Compile the source on the MCP. If syntax errors are found, then the error file is automatically opened.
CTRL-ALT-E	Open the error file and show the syntax errors.
CTRL-ALT-N	Jump forwards in the source to the next changed line (since the source was opened in Notepad++).
CTRL-ALT-P	Jump backwards in the source to the previous changed line (since the source was opened in Notepad++).
CTRL-ALT-Q	Resequence the selected lines.
CTRL-ALT-V	Paste with new sequence numbers.
CTRL-ALT-1,2,3,4	Only applicable if compilers are defined for multiple repositories. Activate the compiler with that number and start it.

Example of compilation and loading syntax errors

Start a compilation by pressing the compile icon, or via short key CTRL-ALT-C:

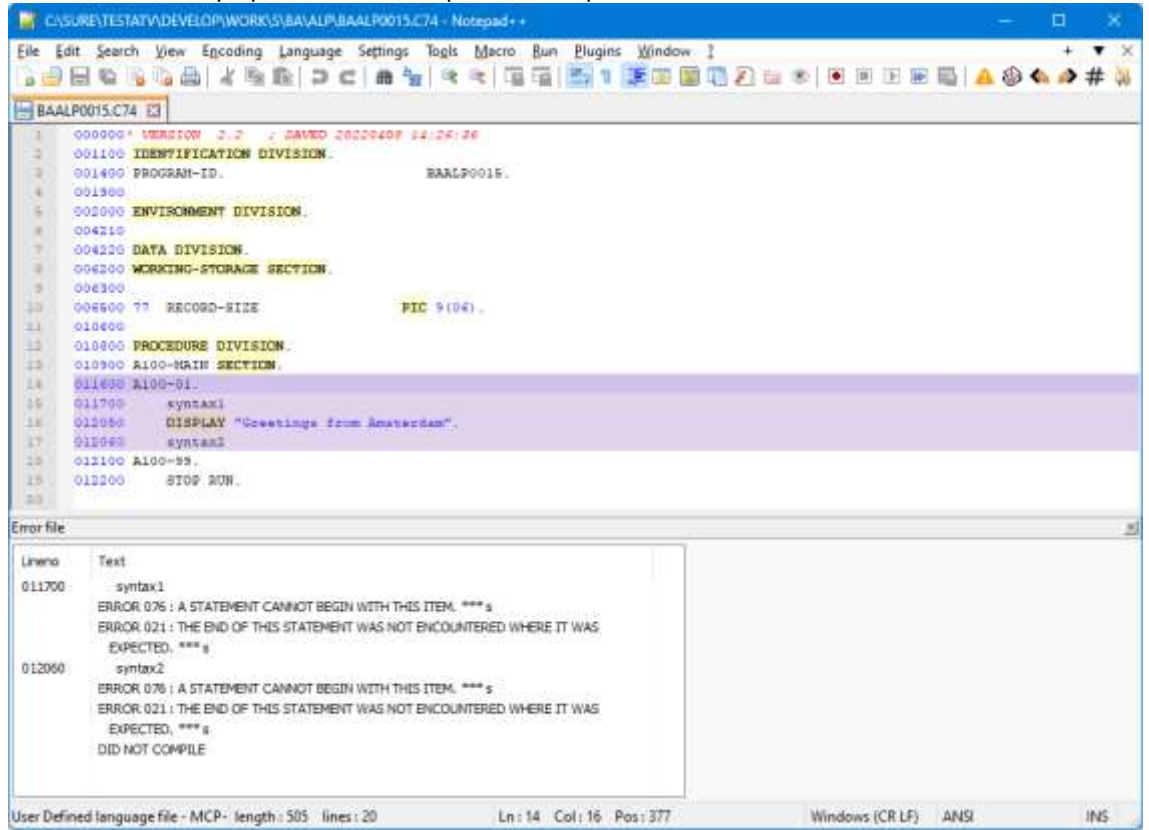


The compilation is done on the MCP under the control of program AS_COMP.EXE:

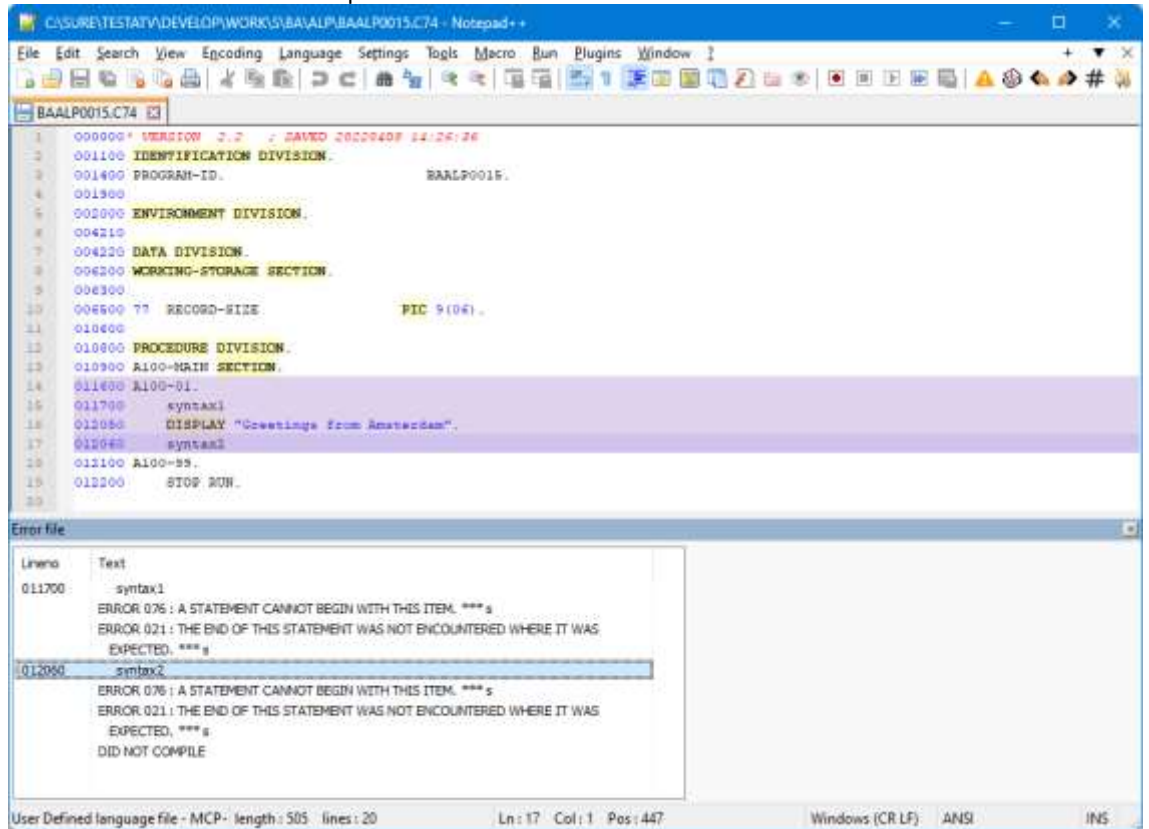


- In this example the compiler found syntax errors

The error file is automatically opened in an extra pane of Notepad++:



Double click on a line in the error file to position on that line in the source:

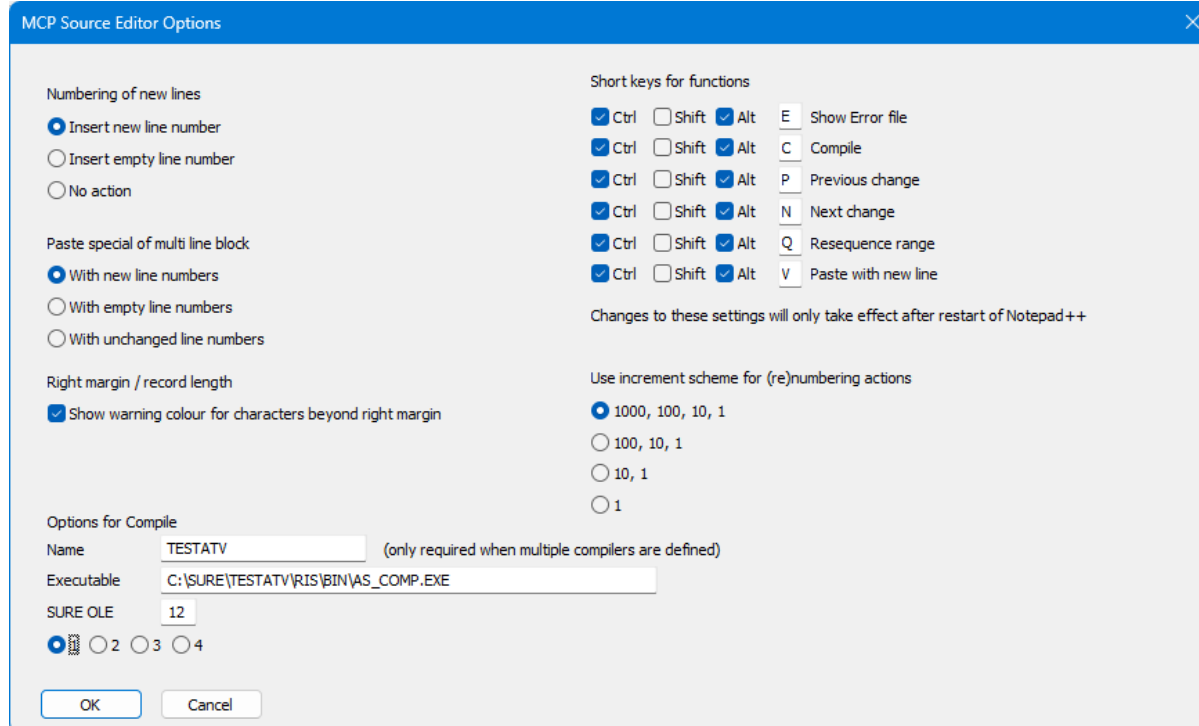


Installation

Copy <SURE installation directory>\RIS\BIN\MCPSourceEditor.dll
 as <Notepad++ installation directory>\plugins\MCPSourceEditor\MCPSourceEditor.dll

Configuration

Menu bar → Plugins → MCP Source Editor → Options



- Radio button 'Numbering of new lines'
 - Insert new line number The new line automatically gets a new sequence number (length 6 for COBOL, length 8 for ALGOL and WFL). This is the preferred setting for MCP sources.
 - Insert empty line number The new line gets an empty sequence number (6 or 8 spaces). This is the preferred setting for MicroFocus-COBOL sources.
 - No action No action; the cursor starts at position 1
- Paste special of multi line block
 - With new line number The new lines automatically get new sequence numbers (length 6 for COBOL, length 8 for ALGOL and WFL). This is the preferred setting for MCP sources.
 - With empty line number The new lines get an empty sequence number (6 or 8 spaces). This is the preferred setting for MicroFocus-COBOL sources.
 - With unchanged number The original sequence numbers are kept
- Show warning color for characters beyond right margin
 - The background color changes to bright orange if characters are typed or pasted beyond the right margin at position 72 (COBOL), 80 (ALGOL), or 88 (WFL).
- Short keys for functions of this plug-in
 - You can change the short keys to your own preferences, for example when a short key is already in use by another plugin that you installed

- Increment scheme for (re)numbering actions
 - o This is applicable for the functions where new sequence numbers are created (paste special, re-sequence, and enter new line).
 - o For example: scheme '1000, 100, 10, 1' means: new sequence numbers are increased with 1000 until it does not fit anymore, then 100 until it does not fit anymore, then 10, and finally the number is increased by 1.

- Options for Compile
 - o These settings are only relevant when MCP sources are compiled (so, not for MF-COBOL).
 - o It is possible to define compile support for up to 4 different SURE repositories. For each SURE repository the following must be defined:

Field	Value
Name	The logical name of the SURE repository
Executable	<SURE installation directory>\RIS\BIN\AS_COMP.EXE
SURE OLE	The OLE server id of the SURE client that works for the SURE repository. If the SURE client is installed multiple times on a workstation, then each instance must have a unique OLE server id.
Radio button 1,2,3,4	This only applicable if compile support is defined for multiple SURE repositories: <ul style="list-style-type: none"> - Each defined compiler has its own number from 1 to 4. This radio button identifies the compiler for the SURE repository that is currently active on your Notepad++ session. - Short key CTRL-ALT-C and the Compile Icon on the toolbar start the compilation for that repository.

Import syntax highlighting for languages COBOL, ALGOL, and JOB

ITSforSURE has created 3 configuration files for syntax highlighting that you can import in Notepad++. The configuration files can be found in the SUREforWindows HELP directory.

The SUREforWindows HELP directory = <SURE installation directory>\RIS\HELP\

Installation:

- Menu bar → Language → User Defined Language → Define your language → Button [Import]:
 - Import file "NotepadPlus syntax highlighting for language Unisys-ALGOL.XML" from the SURE help directory SURE\RIS\HELP\

 - Import file "NotepadPlus syntax highlighting for language Unisys-COBOL.XML" from the SURE help directory SURE\RIS\HELP\

 - Import file "NotepadPlus syntax highlighting for language Unisys-JOB.XML" from the SURE help directory SURE\RIS\HELP\

- Restart Notepad++ to activate the new languages

About the syntax highlighting:

- The most frequently used commands are highlighted. You can adjust the set with recognized keywords to your own needs, as follows:
 - o Open screen Menu bar → Language → Define your language
 - o Select the language via the User language button (top left corner)
 - o Go to tab <Keywords lists> to adjust the lists with recognized words

- For COBOL, ALGOL, and JOB: the language syntax statements, and the Unisys file and task attributes are highlighted in **bold** and with background color 'light yellow':

```
004810     STRING SCAN-DIRECTORY DELIMITED BY SIZE
004820     , "." DELIMITED BY SIZE
004830     INTO SCAN-FILETITLE
004840
004850     MOVE SCAN-FILETITLE TO WS-F500-FILENAME
004860     PERFORM F500-INSPECT-FILENAME
```

- For COBOL and ALGOL: DMS2 statements are highlighted in **bold** and with background color orange:

```
13825000   SET SRELA TO BEGINNING:DMR;
13826000
13827000   WHILE NOT BOOLEAN(DMR) DO BEGIN
13828000       FIND KEY OF NEXT SRELA AT REL-VERSION = V_VERSION
13829000                               AND REL-ASSET = V_ASSET :DMR;
13830000
```

- For ALGOL and JOB: The keywords BEGIN and END are highlighted in **bold** and with background color 'light blue':

```
86553000   IF B_INIT_ERRINFO THEN BEGIN
86553500       REMOVE_FILE("ERRORS/GEN/LFI/"!!ID,EMPTY);
86554000       SET_FILETITLE(ERRORFILE,"ERRORS/GEN/LFI/"!!ID!!".");
86555000   END;
```

- Number and string literals are highlighted in foreground color 'bright blue'
- Comment lines are highlighted in *italic* and foreground color red
- Dollar cards are highlighted in foreground color green

You are free to adjust the used colors to your own preference

Other options of Notepad++

Configure keyboard button [Tab] as 1 space

- Menu bar → Settings → Preferences → tab: Language →

Field	Value
Tab size	1
Replace by space	Enabled

Reason: an MCP source file should not contain tabs.

Allow to select text between delimiters over multiple lines

- Menu bar → Settings → Preferences → tab: Delimiter →

Field	Value
Open and Close	enter appropriate open and close delimiters
Allow on several lines	Enabled

Reason: this option helps the developer to find a matching delimiter

Enable the option to allow cursor positioning beyond the end of a line:

- Menu bar → Settings → Preferences → tab: Editing →

Field	Value
Enable virtual space	Enabled

Reason: handy for developers

- If the option is disabled, then you cannot place your cursor in the trailing spaces after the end of a line
- If the option is enabled, then you can place your cursor anywhere on the line

Disable the option to backup a file when it is saved:

- Menu bar → Settings → Preferences → Backup →

Field	Value
Backup on save	None

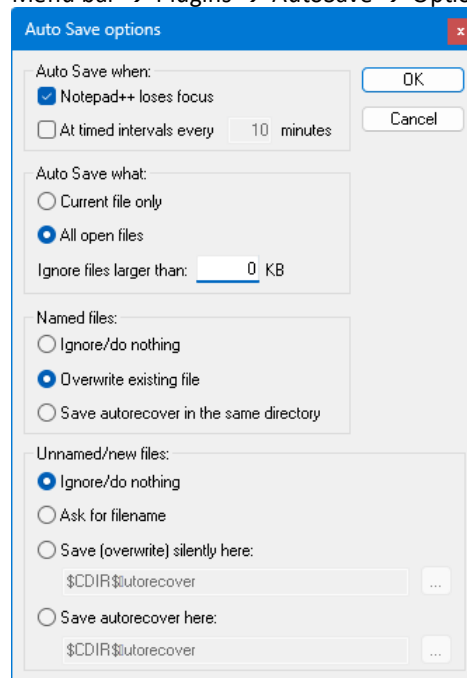
Reason: there is no reason to make intermediate backups when working with SURE

Import the plugin to save the current file automatically when the desktop focus changes to another Window

- Menu bar → Plugins → Plugin Admin... → Tab: Available
Select plugin 'AutoSave' → [Install]

Configure plugin AutoSave as follows:

- Menu bar → Plugins → AutoSave → Options



Reason: when plugin AutoSave is installed then the changes in Notepad++ are automatically saved when you switch to another app. For example when you switch to SURE to do the check in. This improves the integration between SURE and Notepad++.

Try the function in Notepad++ to shift a group of lines to left or right:

- Select a column in the source with [Alt] + Drag mouse with left button pressed

To shift lines to right: press [Tab]

To shift lines to left: press [Delete]

Update the Popup Context Menu

A right mouse click anywhere in the source shows the Popup Context Menu. It is possible to customize this menu.

Reason:

- For developers it is very handy when commands 'Resequenece range' and 'Paste with new line number' (both commands are from the MCP Source Editor plugin) are added to the Popup Context Menu, because those two commands are typically used when you are working with the mouse.

Example:

- o In case of function Resequenece Range:
 - You first select multiple lines via the mouse.
 - Then you right click with the mouse to use function Resequenece Range.
- o In case of function Paste with New Line Numbers:
 - You first select multiple lines via the mouse.
 - Then you right click with the mouse to use function Copy.
 - Finally you right click with the mouse to use function Paste with New Line Numbers.

Update the Popup Context Menu as follows:

- Menu bar → Settings → Edit Popup Context Menu
- This opens file Contextmenu.xml
- Update Contextmenu.xml and add the two **yellow marked** lines to section <ScintillaContextMenu>:


```
<Item MenuEntryName="Edit" MenuItemName="Cut"/>
<Item MenuEntryName="Edit" MenuItemName="Copy"/>
<Item MenuEntryName="Edit" MenuItemName="Paste"/>
<Item PluginEntryName="MCP Source Editor" PluginCommandItemName="Paste with new line numbers"/>
<Item PluginEntryName="MCP Source Editor" PluginCommandItemName="Resequenece range" />
<Item MenuEntryName="Edit" MenuItemName="Delete"/>
<Item MenuEntryName="Edit" MenuItemName="Select all"/>
```
- Save file Contextmenu.xml and restart Notepad++ to test the changed context menu.

You can customize the menu to your own preferences and remove commands from the menu that you won't need.

3 New or deleted batch programs and batch functions

This paragraph gives a summary of the changed batch functions.

All these batch function can be started via Toolbar → Tools → Server environment -> Batch functions.

ABOUT-SURE (Batch Function)

This batch functions creates an overview with the following information:

- For each installed RIS/SURE program: the release-id, creation date, and last access date
- For each repository conversion: the date when the conversion was done

Example

```
RUN RESPECT/REPOSITORY ("ABOUT-SURE") ;
```

The listing can be downloaded via the SURE client, as follows:

- Open folder SURE server → Batch reports → BATCHOUTPUT/<date>
- Right click on file <timestamp>_PRINT/ABOUT-SURE
- Select 'Download' from the menu

ALWAYS-LISTING (Batch Function)

Batch program RESPECT/SURE/ALWAYS/LISTING is changed to batch function ALWAYS-LISTING in program RESPECT/REPOSITORY.

This batch functions enables or disables option 'Create always compile listings when a \$SET LIST is in the compiled source'

```
ALWAYS-LISTING ----- ENABLE ----- |
                |-- DISABLE - |
```

This option can also be defined via the SURE GUI, as follows:

- Right click on the name of the environment where you want to change the option → Properties → Tab SURE batch

Parameters	Explanation
ENABLE	Enable option 'Create always compile listings'
DISABLE	Disable option 'Create always compile listings'

Example

```
RUN RESPECT/REPOSITORY ("ALWAYS-LISTING ENABLE") ;
```

CLEAN-REVIEWED (Batch Function)

This batch function of RESPECT/REPOSITORY cleans old code review information.

```

|-----<-----|
CLEAN-REVIEWED ---- UNTIL --- <yyyymmdd> -----|
|                |-- TODAY - <days> -|
|                |-----|
|-- FILE <file> -----|

```

Parameters
Explanation

UNTIL <option>

This parameter is required.

UNTIL <yyyymmdd> :

- Select all files with code review info older than <yyyymmdd>

UNTIL TODAY - <nr> :

- select all files with code review info older than <nr> days ago.
- This method can be used in a job that runs every week

FILE <file name>

This parameter is optional and works as a filter: if used then only this file is selected. This is for debugging purposes.

Example

```
RUN RESPECT/REPOSITORY("CLEAN-REVIEWED UNTIL TODAY - 7");
```

REVIEWED-OVERVIEW (Batch Function)

This batch function of RESPECT/PRINT lists all information about code reviews that are done during a period.

```

|-----<-----|
REVIEWED-OVERVIEW ---- FROM <yyyymmdd> -----|
|                |-- TO   <yyyymmdd> ---|
|                |-- PROJECT <project> -|
|                |-- USER <user> -----|
|                |-- TASK <task> -----|
|                |-- FILE <file> -----|

```

Parameters
Explanation

FROM <yyyymmdd>

This parameter is required.

The begin date of the period.

TO <yyyymmdd>

The end date of the period. If this parameter is not used, then the end date is today.

PROJECT <project>

This parameter is optional and works as a filter: if used then only the files with this project or system are selected.

USER <user-id>

This parameter is optional and works as a filter: if used then only the files that are reviewed by this user are selected.

TASK <task name>

This parameter is optional and works as a filter: if used then only the files that are reviewed because of this task are selected.

FILE <file name> This parameter is optional and works as a filter: if used then only this file is selected.
This is for debugging purposes.

Example

```
RUN RESPECT/PRINT ("REVIEWED-OVERVIEW FROM 20220101 PROJECT SYS1");
```

LOAD-CVIDE-FILES (Batch Function)

This batch function (re)loads the templates for the CV-IDE solution and project file. These templates are required for the integration between SURE and ClearPath Visual IDE.

Read TASK-1690-SURE for details.

Example

```
RUN RESPECT/REPOSITORY("LOAD-CVIDE-FILES");
```

UPDATE-SOURCECOPY (Batch Function)

Use this batch function to update the work directory of checked-out files in SURE when the local work directory of the developers is moved to another server.

Read TASK-1627-SURE for details.

When a source is checked-out with Local Editing enabled, the local work directory (where the source is placed on Windows) is linked to the file name.

At check-in, the linked work directory is used to locate the file.

If for some reason the work location of the developers is moved to another server, then this function can be used to change that in the repository as well, so that developers are still able to do check-in.

```
UPDATE-SOURCECOPY |----<-----|
                   |----- FROM <old directory> ----|
                   |-- TO <new directory ----|
                   |-- DEBUG -----|
```

Parameters	Explanation
FROM <old directory>	The old server directory (where the files were originally placed at check-out)
TO <new directory>	The new server directory (where the files are moved to)
DEBUG	Give displays and do not do updates.

Example

```
RUN RESPECT/REPOSITORY("UPDATE-SOURCECOPY FROM \\server-1\ TO \\server-2\");
```

Task	Status	Date ready	Release
------	--------	------------	---------

4 Full overview of tasks completed in release 110

Group of tasks, manual selection

SURE-2280	Received Reported by Type Project	15 Aug 2007 ITSforSURE FEATURE SURE	SOLVED (DENIED)	6 Oct 2023	at 110
------------------	--	--	-----------------	------------	--------

Create a TASK selection dialog when committing a file from eclipse

SURE-2281	Received Reported by Type Project	15 Aug 2007 ITSforSURE FEATURE SURE	SOLVED (DENIED)	6 Oct 2023	at 110
------------------	--	--	-----------------	------------	--------

Create a POPUP dialog which selects the directory when loading a new project in eclipse

SURE-2476	Received Reported by Type Project	1 Dec 2009 UOFW IMPROVEMENT SURE	SOLVED (already-done)	5 Apr 2023	at 110
------------------	--	---	-----------------------	------------	--------

Make it possible to view a previous version of a program via NxEdit.

TASK-0594-SURE	Received Reported by Type Project	3 Aug 2016 SNS FEATURE SURE	SOLVED (DENIED)	6 Oct 2023	at 110
-----------------------	--	--------------------------------------	-----------------	------------	--------

New method for release numbers of SURE. The last data-part is confusing. Can this be replaced by a build-sequence-number

TASK-0826-GUI64	Received Reported by Type Project	31 Jul 2017 ITSforSURE FEATURE SURE	SOLVED	6 Oct 2023	at 110
------------------------	--	--	--------	------------	--------

Create installer for SURE 64-bit version.

TASK-1456-SURE	Received Reported by Type Project	27 Nov 2020 ITSforSURE ERROR SURE	SOLVED	5 Apr 2023	at 110
-----------------------	--	--	--------	------------	--------

Task	Status	Date ready	Release
Severity MINOR Probability POSSIBLE The status of a file is not updated after the file-type is changed and then transferred to the next environment			
TASK-1476-GUI64 Received Reported by Type Project 16 Dec 2020 ITSforSURE IMPROVEMENT SURE Convert the SURE client from 32-bits to a 64-bits application	SOLVED	5 May 2022	at 110
TASK-1582-SURE Received Reported by Type Project 3 Nov 2021 ITSforSURE ERROR SURE Severity MINOR Probability POSSIBLE Aggregate small patches for SURE version 110 before functional changes	SOLVED	15 Sep 2022	at 110
TASK-1586-SURE Received Reported by Type Project 10 Nov 2021 BBL IMPROVEMENT SURE Code Review: conversion program for old review remarks	SOLVED	6 Dec 2021	at 110, 100
TASK-1590-SURE Received Reported by Type Project 7 Dec 2021 BBL ERROR SURE Severity MINOR Probability POSSIBLE Generated repository directory names may contain double backslashes	SOLVED	23 Dec 2021	at 110, 100
TASK-1591-SURE Received Reported by Type Project 16 Dec 2021 BBL ERROR SURE Severity MODERATE Probability POSSIBLE Scrollbars of Task Maintenance dialog on a small screen may not be able to scroll to the last few positions	SOLVED	6 Jan 2022	at 110, 100

Task	Status	Date ready	Release
------	--------	------------	---------

TASK-1593-SURE	Received Reported by Type Project Severity Probability	21 Dec 2021 ITSforSURE ERROR SURE SEVERE RARE	SOLVED	22 Dec 2021 at 110
-----------------------	---	--	--------	-----------------------

Reprocess Quick Fix gives a message 'Source not loaded in SURE'

TASK-1594-SURE	Received Reported by Type Project	3 Jan 2022 BBL IMPROVEMENT SURE	SOLVED	4 Jan 2022 at 110, 100
-----------------------	--	--	--------	---------------------------

Function Set Code Reviewed: The reference must be mandatory if a name-standard for REVIEW-REFERENCE is defined

TASK-1595-SURE	Received Reported by Type Project Severity Probability	5 Jan 2022 BBL ERROR SURE MODERATE CERTAIN	SOLVED	5 Jan 2022 at 110, 100
-----------------------	---	---	--------	---------------------------

Show Review remarks: this gives a wrong timestamp when the review was done

TASK-1597-SURE	Received Reported by Type Project Severity Probability	12 Jan 2022 BBL ERROR SURE MODERATE LIKELY	SOLVED	18 Jan 2022 at 110, 100
-----------------------	---	---	--------	----------------------------

Download directory may not be presented / updated correctly in Sure Options screen.

Determination of OS version uses Power Shell or Command Prompt, both of which may not be available on some workstations.

TASK-1599-SURE	Received Reported by Type Project	17 Jan 2022 BBL IMPROVEMENT SURE	SOLVED	17 Jan 2022 at 110, 100
-----------------------	--	---	--------	----------------------------

Suppress warning 'File is checked-out on another PC' if the local-work-directory and the local-source-directory are both located on another server which is defined via an URL-mapping

Task	Status	Date ready	Release
TASK-1601-SURE Received Reported by Type Project Severity Probability Function 'Delete project from team' gives sometimes strange response	20 Jan 2022 ITSforSURE ERROR SURE NEGLIGIBLE POSSIBLE SOLVED	20 Jan 2022	at 110, 100
TASK-1602-SURE Received Reported by Type Project Function Add/Update properties: keep a history of the attributes that are changed Solution: See the task explanation form or the task attachment in SURE for detailed information	24 Jan 2022 ITSforSURE FEATURE SURE SOLVED	16 Mar 2022	at 110
TASK-1603-SURE Received Reported by Type Project Severity Probability Review remarks: print to printer fails to print/open the generated report if the destination printer is PDF	24 Jan 2022 BBL ERROR SURE MODERATE POSSIBLE SOLVED	11 Feb 2022	at 110, 100
TASK-1604-SURE Received Reported by Type Project Quick fix reprocessing for tasks TASK-1591-SURE, TASK-1597-SURE, TASK-1603-SURE. Removal of Control and Audit directories in tool/data repository definitions (obsolete). Changes to the way modeless dialogs from the SURE browser take input focus. Many non-functional changes in preparation of the equalization of the 32- and 64-bit versions.	26 Jan 2022 ITSforSURE IMPROVEMENT SURE SOLVED	12 Feb 2022	at 110
TASK-1606-SURE Received Reported by Type Project Create extra SURE events when a task is transferred Solution: See the task explanation form or the task attachment in SURE for detailed information	11 Feb 2022 BBL IMPROVEMENT SURE SOLVED	11 Feb 2022	at 110, 100

Task	Status	Date ready	Release
TASK-1608-SURE Received 15 Feb 2022 Reported by BBL Type IMPROVEMENT Project SURE	SOLVED	19 Feb 2022	at 110, 100
New print overview with all the files that are reviewed during a specific period			
Solution: The name of the new batch function is REVIEWED-OVERVIEW			
TASK-1609-SURE Received 16 Feb 2022 Reported by SNS Type ERROR Project SURE Severity MINOR Probability POSSIBLE	SOLVED	17 Mar 2022	at 110, 100
System may not be able to find proper editor for opening temporary files without extension			
TASK-1610-SURE Received 19 Feb 2022 Reported by ITSforSURE Type ERROR Project SURE Severity MINOR Probability CERTAIN	SOLVED	20 Feb 2022	at 110, 100
SURE backend on Windows: the form-feed in overviews does not work			
TASK-1611-SURE Received 20 Feb 2022 Reported by ITSforSURE Type IMPROVEMENT Project SURE	SOLVED	22 Feb 2022	at 110, 100
New batch function to cleanup old code-review information			
Solution: The name of the new batch function is CLEAN-REVIEWED			
TASK-1617-SURE Received 8 Apr 2022 Reported by SNS Type ERROR Project SURE Severity MODERATE Probability POSSIBLE	SOLVED	8 Apr 2022	at 110, 100
Task maintenance dialog: dependencies for field TaskGroup are not checked			

Task	Status	Date ready	Release
TASK-1618-SURE Received Reported by Type Project Severity Probability	12 Apr 2022 BBL ERROR SURE MODERATE CERTAIN	SOLVED	25 Apr 2022 at 110, 100

Folder Last Edited (of the SURE client) does not refresh after Checkout or Edit

TASK-1620-SURE Received Reported by Type Project Severity Probability	25 Apr 2022 BBL ERROR SURE MAJOR RARE	SOLVED	25 Apr 2022 at 110, 100
--	--	--------	-------------------------

Invalid index in RESPECT/SURE/COMPILE if very long Compiler Attributes are defined for a file

TASK-1623-SURE Received Reported by Type Project	5 May 2022 BBL IMPROVEMENT SURE	SOLVED	31 May 2022 at 110, 100
---	--	--------	-------------------------

Use the defined MCP editor for function 'View version' on MCP files

TASK-1626-SURE Received Reported by Type Project	9 May 2022 ITSforSURE IMPROVEMENT SURE	SOLVED	15 Sep 2022 at 110
---	---	--------	--------------------

Remove some obsolete file sets from the installation

TASK-1627-SURE Received Reported by Type Project	9 May 2022 BBL IMPROVEMENT SURE	SOLVED	23 May 2022 at 110, 100
---	--	--------	-------------------------

New batch function to change the SOURCE-COPY relations so that they point to another server

Solution: The full parameter of this batch function is as follows:

```
UPDATE-SOURCECOPY FROM <old server directory> TO <new server directory>
```

For example

```
RUN RESPECT/REPOSITORY("UPDATE-SOURCECOPY FROM \\SRVR1\ TO \\SRVR2\ ")
```

You can use this batch function when the local work directory of the developers is moved to another server.

Task	Status	Date ready	Release
------	--------	------------	---------

The issue is that the local work directory is linked in SURE when a file is checked out. A checked-out file can only be checked in if the local work directory at check-in is the same as the local work directory at check-out.

So, if a file is checked-out and the local work directory is then moved to another server, then that file cannot be checked-in anymore.

This batch function changes the server-name in the work directory of the checked-out files to the new server-name, to make check-in possible,

TASK-1628-SURE	Received Reported by Type Project	10 May 2022 ITSforSURE IMPROVEMENT SURE	SOLVED	11 May 2022	at 110
-----------------------	--	--	--------	-------------	--------

Implement Download Server for directories with more than 120 files

TASK-1629-SURE	Received Reported by Type Project Severity Probability	11 May 2022 SNS ERROR SURE MINOR RARE	SOLVED	11 May 2022	at 110, 100
-----------------------	---	--	--------	-------------	-------------

A team leader cannot add a new team if new name is already known in SURE for another reason

TASK-1630-SURE	Received Reported by Type Project	11 May 2022 BBL IMPROVEMENT SURE	SOLVED	15 Sep 2022	at 110
-----------------------	--	---	--------	-------------	--------

Make each batch function only visible for the users with the right authorizations

Solution: See the task explanation form or the task attachment in SURE for detailed information

TASK-1633-SURE	Received Reported by Type Project Severity Probability	16 May 2022 SNS ERROR SURE MINOR RARE	SOLVED	16 May 2022	at 110, 100
-----------------------	---	--	--------	-------------	-------------

Function Delete project from Team: the linked project-list is truncated after 200 lines

Task	Status	Date ready	Release
TASK-1634-RIS Received Reported by Type Project New batch function: ABOUT-SURE New ODT function at Windows-backend: ABOUT <wildcard> Both functions give an overview of the creation-dates of the SURE software Solution: This batch functions creates an overview with the following information: - For each installed RIS/SURE program: the release-id, creation date, and last access date - For each repository conversion: the date when the conversion was done	17 May 2022	SOLVED	22 May 2022 at 110, 100
TASK-1635-SURE Received Reported by Type Project Use the setting of global option 'Show files of all projects' also in the Compile Interface Solution: If the option is enabled, then each user can see the files of all projects/systems	17 May 2022	SOLVED	18 May 2022 at 110, 100
TASK-1636-SURE Received Reported by Type Project New method to skip the automatic translation to uppercase of a token of the batch program input parameter Solution: See the task explanation form or the task attachment in SURE for detailed information	24 May 2022	SOLVED	25 May 2022 at 110
TASK-1637-SURE Received Reported by Type Project Function Download directory: remove the temporary DIR file when the download is done	1 Jun 2022	SOLVED	1 Jun 2022 at 110
TASK-1639-SURE Received Reported by Type Project	7 Jun 2022	SOLVED	14 Aug 2023 at 110

Task	Status	Date ready	Release
Update documentation of AW_OBJ.INI			
TASK-1641-SURE Received Reported by Type Project	13 Jun 2022 ITSforSURE IMPROVEMENT SURE	SOLVED	15 Jun 2022 at 110
Task group: lowercase characters are also allowed in the name			
TASK-1642-SURE Received Reported by Type Project	14 Jun 2022 ITSforSURE IMPROVEMENT SURE	SOLVED	15 Jun 2022 at 110
Support to de-activate a usercode-directory via drop down list			
Solution: A SURE user-id must be disabled via Organization --> User An MCP usercode must be disabled via Configuration --> Drop down box --> Usercode			
TASK-1643-SURE Received Reported by Type Project	15 Jun 2022 ITSforSURE IMPROVEMENT SURE	SOLVED	17 Aug 2022 at 110
Improve support for global drop-down lists			
TASK-1644-SURE Received Reported by Type Project	22 Jun 2022 SNS FEATURE SURE	SOLVED	28 Jul 2022 at 110, 100
Examine: scan python script pc-sources for programs that are started by the script			
TASK-1645-SURE Received Reported by Type Project Severity Probability	29 Jun 2022 BBL ERROR SURE SEVERE POSSIBLE	SOLVED	25 Aug 2022 at 110, 100
Leak in code-review procedure: the request for code-review is not always added after a delink + link			
TASK-1649-SURE Received	14 Jul 2022	SOLVED	14 Jul 2022 at 110

Task	Status	Date ready	Release
------	--------	------------	---------

Reported by	ITSforSURE
Type	ERROR
Project	SURE
Severity	MINOR
Probability	RARE

Function View gives sometimes no response

TASK-1652-SURE	Received Reported by Type Project	27 Jul 2022 ITSforSURE IMPROVEMENT SURE	SOLVED	27 Jul 2022	at 110
-----------------------	--	--	--------	-------------	--------

Remove unused functionality in RIS/MENU that a documentation text file is checked-out and checked-in together with a source

TASK-1655-RIS	Received Reported by Type Project	14 Aug 2022 SNS IMPROVEMENT SURE	SOLVED	17 Aug 2022	at 110, 100
----------------------	--	---	--------	-------------	-------------

New: the last run date of a program is now also kept in a relation with class LAST-RUN

Solution: There is also a conversion function to create LAST-RUN relations from earlier loaded statistics records
RUN RESPECT/REPOSITORY("CONVERT 78")

TASK-1656-SURE	Received Reported by Type Project	15 Aug 2022 SNS IMPROVEMENT SURE	SOLVED	15 Aug 2022	at 110
-----------------------	--	---	--------	-------------	--------

Folder Drop Down Boxes: sort the lines in alphabetical order

TASK-1657-SURE	Received Reported by Type Project	17 Aug 2022 SNS IMPROVEMENT SURE	SOLVED	20 Aug 2022	at 110, 100
-----------------------	--	---	--------	-------------	-------------

Extra column in the Run Statistics that shows the compilation date of the object that ran
Release 100: prepare the column for release 110

TASK-1660-SURE	Received Reported by Type Project	31 Aug 2022 ITSforSURE IMPROVEMENT SURE	SOLVED	31 Aug 2022	at 110
-----------------------	--	--	--------	-------------	--------

Task	Status	Date ready	Release
------	--------	------------	---------

Improve functions Assign and Undo Request if the task wherefore the Request was done is deleted

TASK-1661-SURE	Received Reported by Type Project	31 Aug 2022 ITSforSURE IMPROVEMENT SURE	SOLVED	31 Aug 2022	at 110, 100
-----------------------	--	--	--------	-------------	-------------

Small improvements for Logon via Windows Account in the case that the SURE UserId differs from the Windows account

Solution: The following changes are made:

1. It is not allowed to log-on if the Windows account is de-activated
2. If the Windows account is de-activated or deleted, then the links between the Windows account and SURE usercodes are removed.
3. If a SURE user-id is de-activated or deleted, then the links between the SURE user-id and Windows accounts are removed.
4. It is not possible to link a SURE user-id to a de-activated Windows account

TASK-1662-SURE	Received Reported by Type Project	6 Sep 2022 ITSforSURE FEATURE SURE	SOLVED	15 Sep 2022	at 110
-----------------------	--	---	--------	-------------	--------

Make it possible to define a default project and file-type for a directory. The defaults are pre-filled when a new file is added in that directory

Solution: See the task explanation form or the task attachment in SURE for detailed information

TASK-1663-SURE	Received Reported by Type Project	13 Sep 2022 BBL IMPROVEMENT SURE	SOLVED	13 Sep 2022	at 110, 100
-----------------------	--	---	--------	-------------	-------------

Implement function 'Clear code-review' in RIS/MENU

Solution: This is implemented via the following new commands in RIS/MENU => SURE

Clear all code review requests of a file:
Command = CLEARREVIEW
File = <filename>

Clear the Code Review request of a file for a specific task:
Command = CLEARREVIEW <task-name>
File = <filename>

TASK-1665-SURE	Received Reported by Type Project Severity Probability	19 Sep 2022 ITSforSURE ERROR SURE MODERATE CERTAIN	SOLVED	20 Sep 2022	at 110
-----------------------	---	---	--------	-------------	--------

Task	Status	Date ready	Release
------	--------	------------	---------

SURE backend on Windows: Function List File does not work properly for PC files

TASK-1666-SURE	Received Reported by Type Project	20 Sep 2022 SNS IMPROVEMENT SURE	SOLVED	20 Sep 2022	at 110
-----------------------	--	---	--------	-------------	--------

Function View FileVersion on a MicroFocus COBOL PC-file: Write in the first comment line of the created file the File Version number of the source

TASK-1668-SURE	Received Reported by Type Project	5 Oct 2022 ITSforSURE IMPROVEMENT SURE	SOLVED	15 Nov 2022	at 110
-----------------------	--	---	--------	-------------	--------

Update help info, implement Help button on RFW formats with generated buttons

TASK-1670-SURE	Received Reported by Type Project	13 Oct 2022 BBL FEATURE SURE	SOLVED	14 Nov 2022	at 110
-----------------------	--	---------------------------------------	--------	-------------	--------

Review the options 'Insert carriage return and line feed' and 'Remove carriage return and line feed' for the following functions:

- Check-out MCP data file
- Check-in MCP data file
- View MCP data file
- Upload MCP data file
- Download MCP data file

Solution: See the task explanation form or the task attachment in SURE for detailed information

TASK-1671-SURE	Received Reported by Type Project	17 Oct 2022 ITSforSURE IMPROVEMENT SURE	SOLVED	17 Oct 2022	at 110
-----------------------	--	--	--------	-------------	--------

Function Show Code Review remarks: show the newest remarks on top

TASK-1673-SURE	Received Reported by Type Project	1 Nov 2022 SNS IMPROVEMENT SURE	SOLVED	4 Nov 2022	at 110
-----------------------	--	--	--------	------------	--------

Show the review status on the task reports

Task	Status	Date ready	Release
------	--------	------------	---------

Solution: See the task explanation form or the task attachment in SURE for detailed information

TASK-1674-SURE	Received Reported by Type Project	7 Nov 2022 ITSforSURE IMPROVEMENT SURE	SOLVED	8 Nov 2022	at 110
-----------------------	--	---	--------	------------	--------

Do not allow to link a PC file-type to an MCP file, or an MCP file-type to a PC file.

TASK-1676-SURE	Received Reported by Type Project	15 Nov 2022 ITSforSURE FEATURE SURE	SOLVED	28 Nov 2022	at 110
-----------------------	--	--	--------	-------------	--------

Implement SURE-find in delta files

Solution: See the task explanation form or the task attachment in SURE for detailed information

TASK-1677-SURE	Received Reported by Type Project	5 Dec 2022 SNS IMPROVEMENT SURE	SOLVED	6 Dec 2022	at 110
-----------------------	--	--	--------	------------	--------

User overview: show the last date that a user logged on

TASK-1678-SURE	Received Reported by Type Project	6 Dec 2022 ITSforSURE FEATURE SURE	SOLVED	22 Dec 2022	at 110
-----------------------	--	---	--------	-------------	--------

Update help information

TASK-1679-SURE	Received Reported by Type Project	3 Jan 2023 BBL FEATURE SURE	SOLVED	9 Jan 2023	at 110
-----------------------	--	--------------------------------------	--------	------------	--------

Make it possible to change the background color of the SURE browser

Solution: See the task explanation form or the task attachment in SURE for detailed information

TASK-1680-SURE	Received Reported by Type Project	9 Jan 2023 ITSforSURE ERROR SURE	SOLVED	9 Jan 2023	at 110
-----------------------	--	---	--------	------------	--------

Task	Status	Date ready	Release
------	--------	------------	---------

Severity	MODERATE
Probability	POSSIBLE

Crash of RESPECT/SURE/FIND if an empty file is scanned

TASK-1681-SURE	Received Reported by Type Project	9 Jan 2023 ITSforSURE FEATURE SURE	SOLVED	10 Jan 2023	at 110
-----------------------	--	---	--------	-------------	--------

Function Select File: make it possible to enter a directory name.

Solution: See the task explanation form or the task attachment in SURE for detailed information

TASK-1682-SURE	Received Reported by Type Project	24 Jan 2023 ITSforSURE IMPROVEMENT SURE	SOLVED	10 Mar 2023	at 110
-----------------------	--	--	--------	-------------	--------

Task history of a file: skip repeating lines with the same task name

TASK-1683-SURE	Received Reported by Type Project Severity Probability	3 Mar 2023 SNS ERROR SURE MAJOR POSSIBLE	SOLVED	3 Mar 2023	at 110
-----------------------	---	---	--------	------------	--------

SURE backend on Windows: Examine fails if a source is examined simultaneously by two different examine programs

TASK-1684-SURE	Received Reported by Type Project	10 Mar 2023 SNS IMPROVEMENT SURE	SOLVED	10 Mar 2023	at 110
-----------------------	--	---	--------	-------------	--------

Update user attributes log: if nothing changed at the update then mention that in the log

TASK-1685-SURE	Received Reported by Type Project	27 Mar 2023 UNISYS IMPROVEMENT SURE	SOLVED	29 Mar 2023	at 110, 100, 90
-----------------------	--	--	--------	-------------	-----------------

Create the default INFDB description file for DMS release 631

Task	Status	Date ready	Release
TASK-1686-SURE Received Reported by Type Project 5 Apr 2023 ITSforSURE IMPROVEMENT SURE SOLVED 5 Apr 2023 at 110 RESPECT/SURE/COMPILE leaves job-files in directory SURESOURCE/= on disk. Clean them up.			
TASK-1687-SURE Received Reported by Type Project 6 Apr 2023 ITSforSURE IMPROVEMENT SURE SOLVED 7 Apr 2023 at 110 Function Rename File: do not link the file to the task if the file has status REMOVED			
TASK-1688-SURE Received Reported by Type Project 12 Apr 2023 ITSforSURE IMPROVEMENT SURE SOLVED 31 Aug 2023 at 110 Reprocess Quick fix: show after the quick-fix the new file-version on the quick-fix screen			
TASK-1689-SURE Received Reported by Type Project 22 May 2023 ITSforSURE IMPROVEMENT SURE SOLVED 6 Oct 2023 at 110 Move INFDB transaction parameters from Repositories to INI file			
TASK-1690-SURE Received Reported by Type Project 22 May 2023 UNISYS FEATURE SURE SOLVED 29 Aug 2023 at 110, 100, 90 Integration between SURE and Clearpath Visual IDE Controls TASK-1693-SURE TASK-1704-SURE Integration CVIDE (part 2) Integration between SURE and Clearpath Visual IDE part 2 Solution: See the task explanation form or the task attachment in SURE for detailed information			
TASK-1692-SURE Received Reported by Type Project 21 Jun 2023 SNS IMPROVEMENT SURE SOLVED 22 Jun 2023 at 110			

Task	Status	Date ready	Release
------	--------	------------	---------

Improve performance of function 'Task ready'

TASK-1693-SURE	Received Reported by Type Project	22 Jun 2023 UNISYS IMPROVEMENT SURE	SOLVED	22 Jun 2023	at 110, 100
-----------------------	--	--	--------	-------------	-------------

Integration CVIDE (part 2)

Dependent of TASK-1690-SURE Integration between SURE and Clearpath Visual IDE

TASK-1694-SURE	Received Reported by Type Project	23 Jun 2023 BBL IMPROVEMENT SURE	SOLVED	30 Jun 2023	at 110, 100
-----------------------	--	---	--------	-------------	-------------

A new naming standard option where the numeric part gets leading zeroes if the entered number is smaller than the number in the formula

Solution: The following naming standard options are now possible for a numeric part of the name:

([9999999])

- In this case the length of a numeric part of the entered name must be exactly 7 digits.

([8888888])

- In this case the length of a numeric part of the entered name must be between 1 and 7 digits.

- Leading zeroes (â€œ0â€™) are added if the length is less than 7 digits.

([ZZZZZZZ])

- In this case the length of a numeric part of the entered name must be between 1 and 7 digits.

- Leading zeroes (â€œ0â€™) are not added if the length is less than 7 digits.

TASK-1695-SURE	Received Reported by Type Project	4 Jul 2023 BBL FEATURE SURE	SOLVED	12 Jul 2023	at 110, 100
-----------------------	--	--------------------------------------	--------	-------------	-------------

Improvements for Task Reference.

- Implement a new environment option: 'Task reference required'. A task without reference cannot be transferred to that environment if the option is enabled.

- Show the task reference on the task transfer screen, plus a button to update the reference.

- Make it possible to validate the task reference when entered.

Controls TASK-1696-SURE Reprocess patches for 'task reference' at release 100

Solution: See the task explanation form or the task attachment in SURE for detailed information

TASK-1696-SURE	Received Reported by Type	11 Jul 2023 ITSforSURE IMPROVEMENT	SOLVED	11 Jul 2023	at 110, 100
-----------------------	---------------------------------	--	--------	-------------	-------------

Task	Status	Date ready	Release
Project SURE Reprocess patches for 'task reference' at release 100			
Dependent of	TASK-1695-SURE	Improvements for Task Reference.	
TASK-1701-SURE Received Reported by Type Project	8 Aug 2023 ITSforSURE DOCUMENT SURE	SOLVED	8 Aug 2023 at 110
Test UltraEdit to use it as local editor for MCP source files, and describe the configuration			
Solution: See the task explanation form or the task attachment in SURE for detailed information			
TASK-1702-SURE Received Reported by Type Project Severity Probability	9 Aug 2023 ITSforSURE ERROR SURE SEVERE RARE	SOLVED	9 Aug 2023 at 110
Crash RESPECT/SURE/EXAMINE on a data file with maxrecsize > 1000			
TASK-1703-SURE Received Reported by Type Project	14 Aug 2023 SNS IMPROVEMENT SURE	SOLVED	15 Aug 2023 at 110
Function Recover File: delete TO-REVIEW markers for the file in the recover-destination environments			
TASK-1704-SURE Received Reported by Type Project	29 Aug 2023 UNISYS IMPROVEMENT SURE	SOLVED	29 Aug 2023 at 110, 100, 90
Integration between SURE and Clearpath Visual IDE part 2			
Dependent of	TASK-1690-SURE	Integration between SURE and Clearpath Visual IDE	
TASK-1707-SURE Received Reported by Type Project	7 Sep 2023 SNS IMPROVEMENT SURE	SOLVED	7 Sep 2023 at 110
Allow to close a master task if all subtasks have status SOLVED			

Task	Status	Date ready	Release
TASK-1708-SURE Received Reported by Type Project Notes of release 110	7 Sep 2023 ITSforSURE FEATURE SURE SOLVED	6 Oct 2023	at 110
TASK-1709-SURE Received Reported by Type Project Windows backend: implement site library	26 Sep 2023 SNS FEATURE SURE SOLVED	6 Oct 2023	at 110
Solution:	See the task explanation form or the task attachment in SURE for detailed information		
TASK-1710-SURE Received Reported by Type Project Use Notepad++ as local editor for MF-COBOL files and MCP source files	28 Sep 2023 ITSforSURE FEATURE SURE SOLVED	6 Oct 2023	at 110
Solution:	See the task explanation form or the task attachment in SURE for detailed information		
TASK-1711-SURE Received Reported by Type Project Automatic upgrade for SURE installations does not work for new installation procedure	4 Oct 2023 ITSforSURE ERROR SURE SOLVED	6 Oct 2023	at 110
TASK-1712-SURE Received Reported by Type Project Allow to delink a subtask from a mastertask via the task-transfer screen It is only possible to delink. It is NOT possible to make a task dependent of a mastertask via the transfer screen. That must be done via drag and drop in the SURE browser	12 Oct 2023 BBL IMPROVEMENT SURE SOLVED	12 Oct 2023	at 110
TASK-1714-SURE Received Reported by	17 Oct 2023 ITSforSURE SOLVED	17 Oct 2023	at 110

Task	Status	Date ready	Release
-------------	---------------	-------------------	----------------

Type	IMPROVEMENT
Project	SURE

Change program RESPECT/SURE/ALWAYS/LISTING to batch function CHANGE-ALWAYS-LISTING in RESPECT/REPOSITORY